

# Watershed Restoration Plan for the Savannah River Basin



2001



## EXECUTIVE SUMMARY

This document, prepared by the North Carolina Wetlands Restoration Program (NCWRP), presents a description of Targeted Local Watersheds within the Savannah River Basin. It is the first update since the original Basinwide Wetlands and Riparian Restoration Plan for the Savannah River Basin was released in 1998. This plan is different from the preceding document in that a more in-depth description is provided that focuses on specific areas of interest referred to as Targeted Local Watersheds. Local watersheds are targeted based on their need and opportunity for stream, wetland and riparian buffer restoration. The watershed approach is the outgrowth of the recognition that water quality improvements are likely to have more pronounced and longer lasting effects if assessments and restoration efforts are focused on the local watershed level as opposed to discrete and isolated stream segments within the basin as a whole. The NCWRP hopes that the geographic targets provided will be used by other agencies, groups and local governments for the location of water quality improvement projects. Coordinating project implementation in watersheds with significant restoration need can allow organizations with similar goals to generate greater positive ecological impact on North Carolina's aquatic resources through complementary efforts with cumulative impacts.

This document is designed for use in conjunction with the Guide to NCWRP's Watershed Restoration Planning Strategy. General information pertaining to program goals and plan methodology is provided in the planning guide. Information relating to Savannah River Basin restoration goals and basin-specific resource assessments are contained within this Restoration Plan.

In general, this document provides an overview of the Savannah River Basin, and describes each Targeted Local Watershed. In the overview of the basin (Section 2) is a map showing both Savannah River subbasins highlighting the Targeted Local Watershed. Section 2 contains a general description of the basin, habitat information, permitted wetlands losses and use support information.

In Section 3, basin-specific restoration goals are outlined, as well as a brief discussion regarding the Targeted Local Watershed selection process. This section also provides detailed information regarding the stakeholder process that was a valuable part of the development of this plan, as public input was solicited and weighed heavily in the selection of Targeted Local Watershed.

The Targeted Local Watershed is described in Section 4. This section describes the subbasin containing the Targeted Local Watershed. This is followed by a more detailed map of the Targeted Local Watershed.

Section 5 contains contact information for several water quality initiatives taking place within the Savannah River Basin, as well as programs and projects.

## TABLE OF CONTENTS

EXECUTIVE SUMMARY.....	<i>i</i>
TABLE OF CONTENTS .....	<i>ii</i>
LIST OF FIGURES.....	<i>iii</i>
LIST OF TABLES.....	<i>iii</i>
SECTION 1: INTRODUCTION.....	1
<i>Purpose and Background of the NC Wetlands Restoration Program .....</i>	<i>1</i>
<i>Purpose of Watershed Restoration Plans .....</i>	<i>1</i>
<i>Application of Geographic Information Systems (GIS) .....</i>	<i>1</i>
SECTION 2: OVERVIEW OF THE SAVANNAH RIVER BASIN .....	3
<i>Habitat Information .....</i>	<i>3</i>
<i>Wetland and Riparian Area Species Information .....</i>	<i>3</i>
<i>Permitted Wetland and Stream Losses .....</i>	<i>5</i>
<i>Division of Water Quality Use Support Ratings .....</i>	<i>6</i>
SECTION 3: RESTORATION GOALS FOR THE SAVANNAH RIVER BASIN .....	7
<i>Targeted Local Watersheds.....</i>	<i>7</i>
<i>Public Input into the Targeted Local Watershed Selection Process .....</i>	<i>8</i>
SECTION 4: TARGETED LOCAL WATERSHEDS IN THE SAVANNAH RIVER BASIN BY SUBBASIN 9	
<i>Subbasin 03-13-02 – Horsepasture and Toxaway Rivers:.....</i>	<i>9</i>
SECTION 5: CONTACT INFORMATION FOR THE SAVANNAH RIVER BASIN .....	13
<i>References Cited.....</i>	<i>17</i>
APPENDIX 1: COMPREHENSIVE LIST OF TARGETED LOCAL WATERSHEDS IN THE SAVANNAH RIVER BASIN.....	18

## LIST OF FIGURES

FIGURE 1 MAP OF SAVANNAH RIVER BASIN SUBBASINS AND TARGETED LOCAL WATERSHEDS .....	4
FIGURE 2: MAP OF SAVANNAH SUBBASIN 02 .....	10
FIGURE 3 MAP OF HORSEPASTURE RIVER WATERSHED .....	12

## LIST OF TABLES

<b>TABLE 1:</b> PERMITTED WETLAND IMPACTS (ACRES) IN THE SAVANNAH RIVER BASIN BY SUBBASIN FROM 1995-2000.....	5
<b>TABLE 2:</b> PERMITTED STREAM IMPACTS (LINEAR FEET) IN THE SAVANNAH RIVER BASIN BY SUBBASIN FROM 1995-2000.....	6
<b>TABLE 3:</b> SUMMARY OF INFORMATION ABOUT TARGETED LOCAL WATERSHED IN SAVANNAH RIVER BASIN SUBBASIN 02. ....	11
<b>TABLE 4:</b> CONTACTS FOR FEDERAL WATER QUALITY PROGRAMS AND INITIATIVES IN THE SAVANNAH RIVER BASIN.....	14
<b>TABLE 5:</b> CONTACTS FOR STATEWIDE WATER QUALITY PROGRAMS AND INITIATIVES IN THE SAVANNAH RIVER BASIN.....	15
<b>TABLE 6:</b> CONTACTS FOR LOCAL WATER QUALITY PROGRAMS AND INITIATIVES IN THE SAVANNAH RIVER BASIN.....	16

## **SECTION 1: INTRODUCTION**

### ***Purpose and Background of the NC Wetlands Restoration Program***

Recognizing the value of wetlands and riparian areas for maintaining water quality, storing floodwaters, providing fish and wildlife habitat, and performing other valuable functions, the North Carolina General Assembly established the North Carolina Wetlands Restoration Program (NCWRP) in 1996. The purpose of the NCWRP is to restore, enhance, preserve and create wetlands, stream and riparian buffer areas throughout North Carolina's seventeen major river basins (G.S. 143-214.9). The goals of the program are:

- To protect and improve water quality by restoring wetland and stream functions and values lost through historic, current and future permitted impacts.
- To achieve a net increase in wetlands acres, functions, and values in all of North Carolina's major river basins.
- To promote a comprehensive approach for protecting natural resources.
- To provide a consistent approach to addressing wetland and stream mitigation requirements associated with wetland regulations, and to increase the ecological effectiveness of mitigation projects.

### ***Purpose of Watershed Restoration Plans***

To accomplish the goals described above, the NCWRP develops Watershed Restoration Plans to focus planning and implementation of restoration activities within each of the 17 major river basins. These plans provide information on areas in the state that the NCWRP has determined are a priority for restoration efforts. The NCWRP uses the Watershed Restoration Plans to target degraded wetland and riparian areas which, if restored, could contribute significantly to the goal of protecting and enhancing watershed functions.

The purpose of this document is to communicate to interested parties and individuals specific areas in the Savannah River Basin where the NCWRP will consider implementing restoration projects. This document also provides justification for those choices. It is intended to complement two other NC Division of Water Quality (DWQ) documents: 1) the Savannah River Basinwide Water Quality Plan (2001), and 2) the Guide to the NCWRP's Watershed Restoration Planning Strategy.

One purpose for communicating the specific watersheds where the NCWRP intends to focus its projects is to encourage other groups and organizations to consider implementing projects in these areas also. The NCWRP believes that multiple restoration projects concentrated within a local watershed will result in greater benefits to water quality.

### ***Application of Geographic Information Systems (GIS)***

In order to target areas of focus, the NCWRP relies heavily on geographic data. With a variety of habitat and water quality data available digitally, NCWRP staff can view a variety of information about river basins, subbasins and local watersheds to evaluate watersheds for restoration need and opportunity. The NCWRP uses the following data for this analysis: water

quality data (use support ratings and surface water quality classifications), resource information (location of streams, wetlands and important aquatic habitats), and basic location references (such as municipalities, roads and county boundaries).

As a component of the Watershed Restoration Plans, the NCWRP develops GIS-based maps to communicate NCWRP priority areas for restoration projects. Each restoration plan includes maps of the river basin, all subbasins that contain Targeted Local Watersheds, and each Targeted Local Watershed. To reduce printing costs, most of these maps are black and white. However, a full set of color maps are provided through the NCWRP web site for anyone interested in referencing more thorough and detailed geographic information on NCWRP targeted watersheds.

To evaluate watershed conditions, the NCWRP assesses multiple data and information sources describing the location and condition of natural resources. The information described in Sections 2 and 3 was compiled from a number of existing sources including DWQ's Basinwide Water Quality Plans, the Natural Heritage Program's Rare Plant and Animal Lists and the Wildlife Resource Commission's Division of Game and Inland Fisheries Draft Management Plan for the Savannah River Basin. A more detailed discussion of the types of information evaluated by the NCWRP is included in Section 2 of the Guide to NCWRP's Watershed Restoration Planning Strategy.

## **SECTION 2: OVERVIEW OF THE SAVANNAH RIVER BASIN**

The headwaters of the Savannah River Basin originate in North Carolina's Blue Ridge Province of the Appalachian Mountains (Figure 1). Approximately 1.7% of this basin is located in North Carolina. Most of this basin is located in South Carolina (43%) and Georgia (55%). This basin is the smallest in the state and is located in portions of Jackson, Transylvania, Macon and Clay counties. Major streams and rivers in this basin include: Chattooga River and its tributaries as well as the Toxaway, Horsepasture, Thompson, and Whitewater Rivers which flow into Lakes Jocassee and Keowee and on to the Seneca River. A seventeen-mile segment of the Chattooga River flowing through North Carolina is designated a National Wild and Scenic River. A 4.5 mile stretch of the Horsepasture River is designated a State Natural and Scenic River and a National Wild and Scenic River. Much of the watershed is undeveloped and is owned either by Crescent Resources, a subsidiary of Duke Power, or lies within the Nantahala National Forest. Most of the land is forested, however many second homes are being built in river valleys and near streams. There is a great deal of tourism traffic within this river basin, which is expected to increase with highway improvements in the future (DWQ 2001).

### ***Habitat Information***

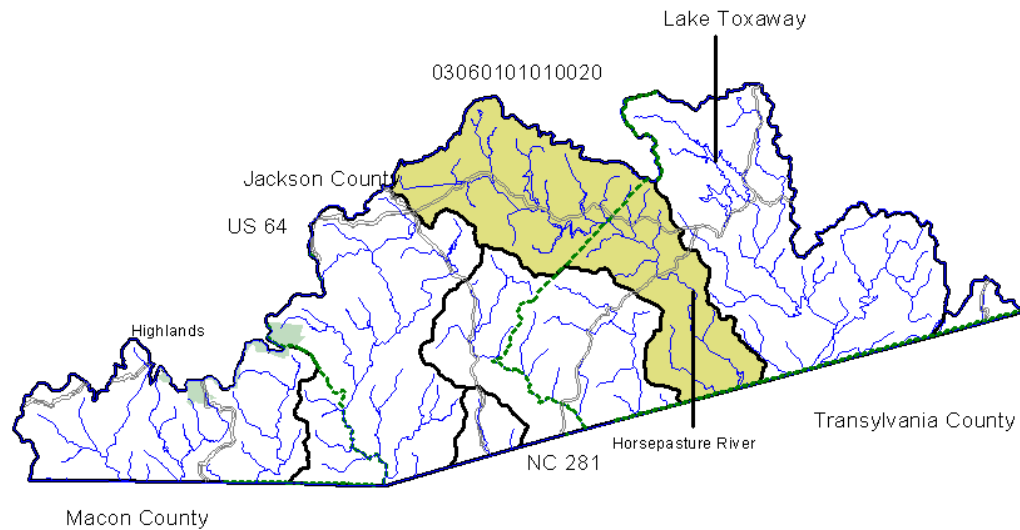
The Savannah River Basin is located in the Mountain physiographic province of the state. The basin contains examples of Southern Appalachian Bog and Swamp Forest—Bog Complex wetland communities. Examples of High Elevation Seep, Rocky Bar and Shore and Spray Cliff community types can also be found in this river basin (Natural Heritage Program, 1999).

### ***Wetland and Riparian Area Species Information***

The Savannah River Basin contains over 100 rare animal and plant species. There are four threatened and endangered animal species listed by federal and state agencies within the Savannah River Basin, including the: green salamander, bog turtle, peregrine falcon and rosy face chub (Natural Heritage Program, 1999).

In addition, the Savannah River Basin has many rare plant species, including three species that are federally listed as threatened or endangered. Several of the rare plants in the Savannah Basin grow in the wet soils of bogs and in the spray of waterfalls on rock cliffs and are indirectly affected by water quality and quantity (Natural Heritage Program, 1999).

According to N.C. Wildlife Resources Commission (WRC) records and maps, the Savannah River Basin contains 43 fish species. Although there are 11 game species, their abundance and distribution is limited. Most fishing effort in the basin is limited to the designated trout streams since access to Toxaway, Cashiers and Fairfield lakes is limited to residents or persons with special permission. Although these reservoirs provide warm and cool water fisheries, they are primarily used for personal watercraft recreation (Wildlife Resources Commission, 1998).



Savannah River Basin

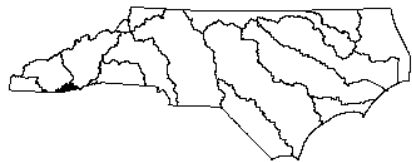
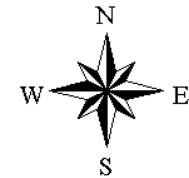


Figure 1  
Savannah  
River Basin



- County Boundaries
- Hydrography
- Primary Roads
- Municipal Boundaries
- Local Watershed Boundaries
- Targeted Local Watershed

This map was produced on 12/11/01 by the North Carolina Division of Water Quality Wetlands Restoration Program. Data was provided by the North Carolina Center for Geographic Information and Analysis.

The map is based on:  
 Projection: Stateplane  
 Zone: 4901  
 Datum: NAD 83  
 Spheroid: GRS1980  
 Units: Meters

A detailed listing of the state’s rare animal and plant species can be found in the “Natural Heritage Program List of Rare Animal Species of North Carolina” or the “Natural Heritage Program List of the Rare Plant Species of North Carolina” which are published annually. In addition, more information about fisheries in the Savannah River Basin can be found in the “Draft Fisheries Management Plan for the Savannah River Basin” developed by the N.C. Wildlife Resources Commission, Division of Inland Fisheries.

**Permitted Wetland and Stream Losses**

The Division of Water Quality regulates activities in streams and wetlands to ensure that construction projects cause minimal damage to these resources and that unavoidable impacts are addressed through mitigation projects. One important role of the NCWRP is to provide compensation for permitted impacts to wetlands and streams that fall below the regulatory threshold of less than one acre for wetlands and less than 150 feet for streams. The NCWRP uses the permitting database maintained by the Wetlands/401 Unit of the Water Quality Section in the Division of Water Quality to evaluate where the permitted impacts to wetlands and streams across the river basin are the greatest and where NCWRP projects are needed to offset unmitigated impacts.

According to the 401 wetlands tracking database maintained by the Division of Water Quality’s Wetlands/401 Certification Unit, 3.25 acres of wetlands were filled and 232 linear feet of streams were altered between 1995 and 2000 in the Savannah River Basin. See Tables 1 and 2 below and on the next page.

The great majority of wetland and stream impacts (over 80%) were in subbasin 2. These impacts are the result of road building and increased development around the Cashiers-Lake Toxaway resort communities.

**Table 1:** Permitted Wetland Impacts (acres) in the Savannah River Basin by subbasin from 1995-2000.

Division of Water Quality Subbasins	Counties in Subbasin	1995	1996	1997	1998	1999	2000	Subbasin Total
03-13-01	Clay, Macon	0.02	0.02	0	0	0	0	0.04
03-13-02	Jackson, Transylvania	2.6	0	0.26	0.35	0	0	3.21
<b>TOTAL ACRES</b>		<b>2.62</b>	<b>0.02</b>	<b>0.26</b>	<b>0.35</b>	<b>0</b>	<b>0</b>	<b>3.25</b>

**Table 2:** Permitted stream impacts (linear feet) in the Savannah River Basin by subbasin from 1995-2000.

<b>Division of Water Quality Subbasins</b>	<b>Counties in Subbasin</b>	<b>1995</b>	<b>1996</b>	<b>1997</b>	<b>1998</b>	<b>1999</b>	<b>2000</b>	<b>Subbasin Totals</b>
03-13-01	Clay, Macon	0	71	0	0	0	0	71
03-13-02	Jackson, Transylvania	0	0	46	0	115	0	161
<b>TOTAL LINEAR FEET</b>		<b>0</b>	<b>71</b>	<b>46</b>	<b>0</b>	<b>115</b>	<b>0</b>	<b>232</b>

### ***Division of Water Quality Use Support Ratings***

Waters are classified according to their best-intended uses. Determining how well a body of water supports its designated uses is an important method of interpreting water quality data and assessing water quality. The NCWRP uses the use support assessments as criteria in determining restoration need within a local watershed. A stream that is designated as "partially supporting" or "not supporting" its designated uses indicates that wetland and/or stream restoration initiatives within that local watershed could be beneficial to water quality. These two use support designations will cause a stream to be listed as "impaired". If nonpoint source pollution issues are indicated as factors affecting water quality, the NCWRP may consider it as a water body in need of restoration.

The Savannah River Basin has a total of 176.2 miles of freshwater streams. For aquatic life, 0% are rated as not supporting; 0% are rated as partially supporting; and 62% are rated as fully supporting their uses. The remaining 38% of freshwater streams in the Savannah River Basin were not rated.

For individuals interested in more detail about water quality use support ratings, the Savannah River Basinwide Water Quality Plan can be downloaded from the Division of Water Quality website at <http://h2o.enr.state.nc.us/basinwide/index.html> or is available from the Division of Water Quality at (919) 733-5083 ext. 354.

### **SECTION 3: RESTORATION GOALS FOR THE SAVANNAH RIVER BASIN**

Based on an assessment of existing watershed characteristics and resource information, the NCWRP has developed two broad restoration goals for the Savannah River Basin. Each goal reflects the NCWRP's watershed restoration strategy to focus restoration projects within local watersheds in order to address water quality impacts from nonpoint source pollution. The goals also reflect the NCWRP's focus on restoring wetland and riparian area values such as maintaining and enhancing water quality, increasing storage of floodwaters, and improving fish and wildlife habitat. The restoration goals for the Savannah River Basin are listed below.

- Reduce sediment loading and other pollutants from surface runoff by increasing the soil retention, filtration, and nutrient uptake functions of wetland and riparian areas;
- Stabilize streambanks to reduce erosion and sedimentation

#### ***Targeted Local Watersheds***

In order to meet the identified restoration goals, the NCWRP has identified one Targeted Local Watershed in the Savannah River Basin. This geographic priority has been selected based on need and opportunity for restoration in order to focus projects in specific areas in the basin. The decision-making process used to make these selections is described in detail in the Guide to NCWRP's Watershed Restoration Planning Strategy. The purpose for selecting the Targeted Local Watersheds for NCWRP focus is to concentrate project efforts in areas with the highest need and opportunity for restoration. In doing so, projects are more likely to result in water quality protection and improvement through the cumulative effect of multiple projects.

### ***Public Input into the Targeted Local Watershed Selection Process***

To solicit input on Targeted Local Watershed selections, the NCWRP held a Resource Professionals Meeting on December 6, 2000 at the Cradle of Forestry on Highway 276 north of Brevard, NC. The purpose of the meetings was threefold:

1. Explain the NCWRP to resource personnel;
2. Describe the types of sites NCWRP seeks for stream and wetland restoration, and find out about existing and ongoing water quality improvement projects within the basin; and
3. To gather information from local resource professionals and citizens about which local watersheds NCWRP should target.

The following agencies and groups were notified about these meetings:  
The Natural Resources Conservation Service, NC Soil and Water Conservation Districts, Department of Environment and Natural Resources (Asheville Regional Office), the US Forest Service, the US Fish and Wildlife Service, the North Carolina Wildlife Resources Commission, North Carolina Farm Service Agency, and county and municipal governments within the Savannah River basin.

As a follow up to the Resource Professionals Meetings, a letter was sent out to all invitees on July 5, 2001 informing them of the Draft Targeted Local Watersheds. The deadline for commenting on the Draft Targeted Local Watersheds was August 10, 2001

## SECTION 4: TARGETED LOCAL WATERSHEDS IN THE SAVANNAH RIVER BASIN BY SUBBASIN

This section summarizes the condition of natural resources within the subbasin and Targeted Local Watershed in the Savannah River Basin. This section also includes information about potential causes of resource degradation within these areas from the Division of Water Quality's Savannah River Basinwide Water Quality Plan, comments provided by resource professionals within the basin, and comments from the public within the basin. A map of the subbasin showing the Targeted Local Watershed is provided.

The term "local watershed" denotes a small, defined drainage area within a larger subbasin. Specifically, the term "local watershed" or "Targeted Local Watershed" refers to the 14-digit hydrologic unit as defined by the Natural Resource Conservation Service. The term "subbasin" is reserved solely to denote a subbasin of the larger Savannah River Basin, as defined by the Division of Water Quality.

<b>Subbasin 03-13-02</b>	
<i>Area (square miles):</i>	98
<i>1990 Population Estimate:</i>	2,310
<i>Land Cover:</i>	
Forest/Wetland	95.6%
Surface Water	2.1%
Urban	0.3%
Cultivated Crop	0.1%
Pasture/managed herbaceous	1.9%
<i>Use Support Summary (Aquatic Life) for Freshwater Streams (miles):</i>	
• Fully Supporting	39.1
• Partially Supporting	0
• Not Supporting	0
• Not Rated	60.5

### ***Subbasin 03-13-02 – Horsepasture and Toxaway Rivers:***

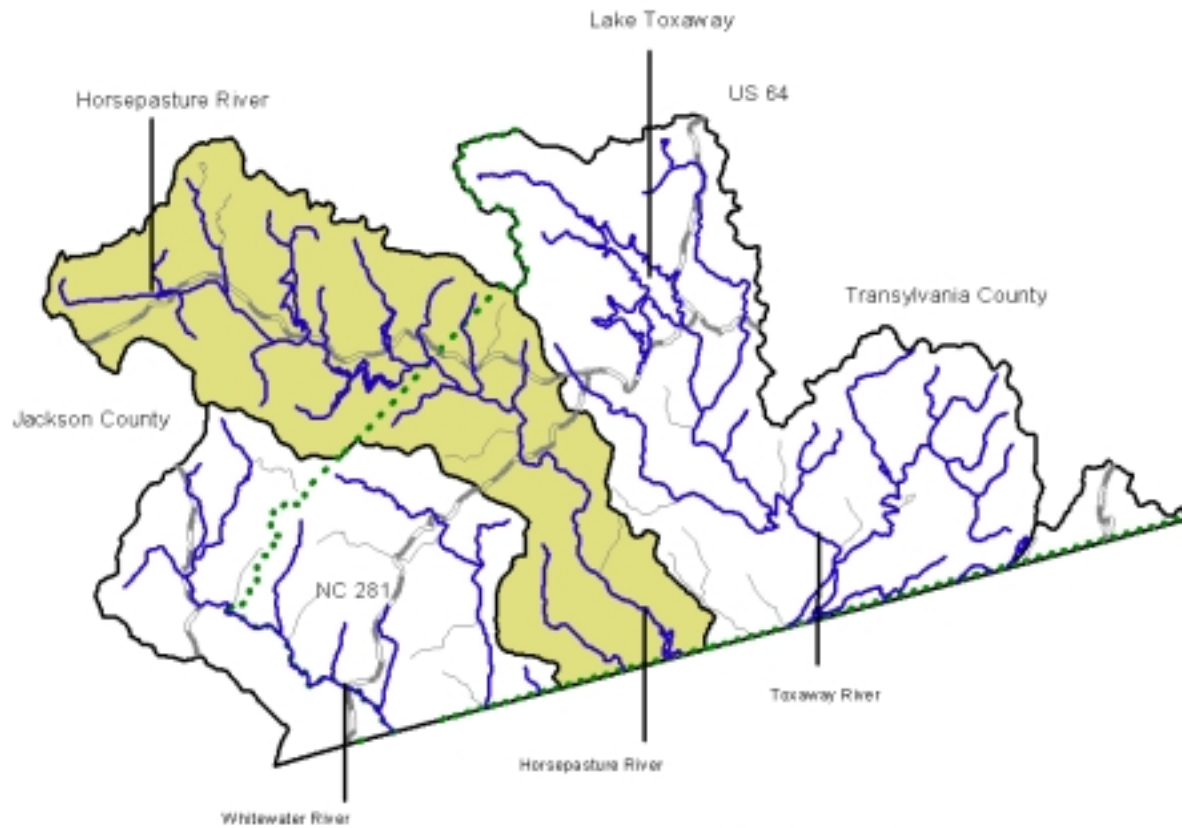
The Horsepasture and Toxaway Rivers originate in Jackson and Transylvania counties and flow in a southeastern direction toward South Carolina's Lake Jocassee (Figure 2). Other tributaries in this subbasin include the Whitewater and Thompson Rivers. The majority of the subbasin is forested and possesses steep topography. Most development consists of retirement and second homes that are being built in the area. Table 3 provides a statistical summary of the Targeted Local Watershed in this subbasin.

### **Horsepasture River, Targeted Local Watershed 10020**

The lower Horsepasture River cascades over the rough topography of the Blue Ridge escarpment where the Jocassee Gorges State Park protects it. However, the headwaters of the Horsepasture flow from the Cashiers area, where there is very little public land and a tremendous amount of resort development (DWQ 2001). The Horsepasture River received an excellent bioclassification in 1999, but benthic macroinvertebrate data show a wide fluctuation over the past 15 years (DWQ 2001). Although the entire watershed is still largely forested, impacts from development were observed in the 1980s and impacts from nonpoint source pollution are still somewhat evident in years of higher flow (DWQ 2001).



**Figure 2  
Savannah River Basin  
Subbasin 02**



- Primary Roads
- County Boundaries Use Support
- County Boundaries Not Rated
- County Boundaries Fully Supporting
- Local Watershed Boundaries
- Targeted Local Watershed

Savannah River Basin



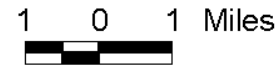
Subbasin 01



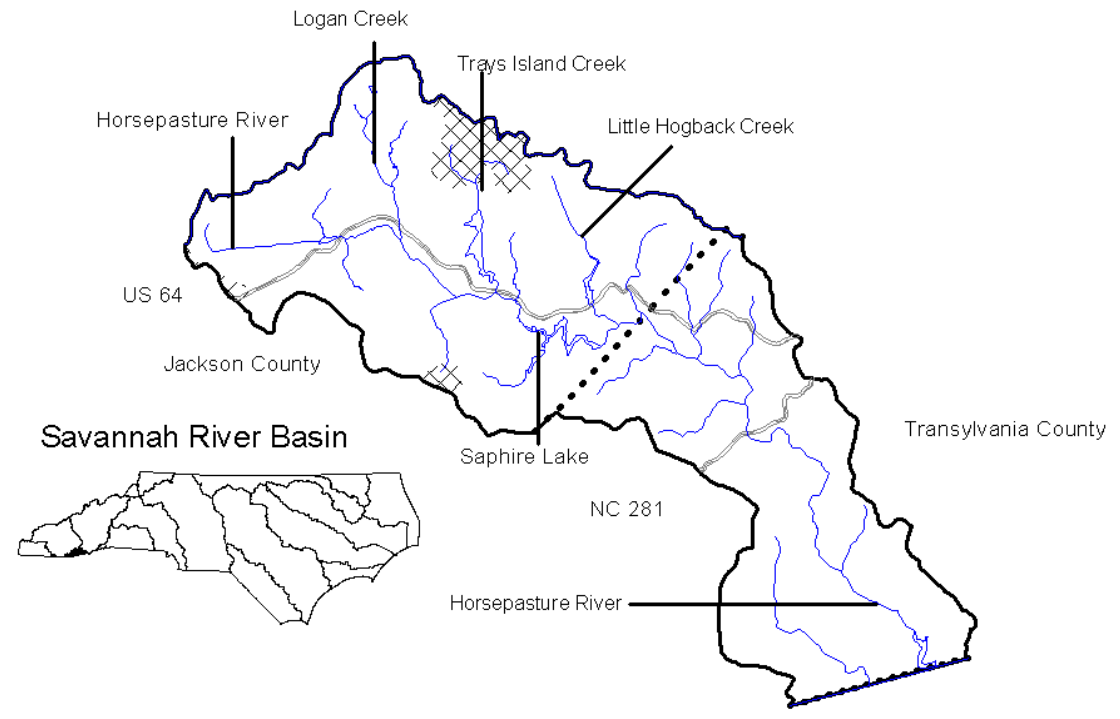
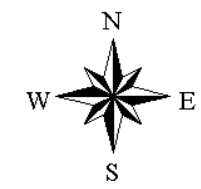
This map was produced on 12/12/01 by the North Carolina Division of Water Quality Wetlands Restoration Program. Data was provided by the North Carolina Center for Geographic Information and Analysis.  
The map is based on:  
Projection: Stateplane  
Zone: 4901  
Datum: NAD83  
Spheroid: GRS 1980  
Units: Meters

**Table 3:** Summary of information about Targeted Local Watershed in Savannah River Basin Subbasin 02.

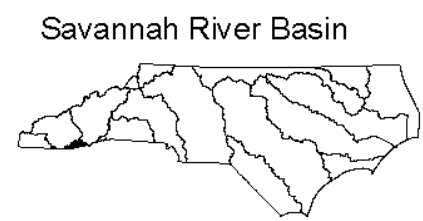
Targeted Local Watershed	Horsepasture River
County	Jackson/Transylvania
14-digit Hydrologic Unit #	03060101010020
Land Area (Square Miles):	33
Miles of Impaired Streams <sup>1</sup> :	NA
Possible Causes of Degradation <sup>2</sup> :	sediment
Possible Sources of Degradation <sup>2</sup> :	development
Stream on NC 2000 303(d) List <sup>3</sup> ?	No
Cleared Land Cover:	3%
Developed Land Cover:	1%
Forested Land Cover:	96%
Within DWQ Water Supply Watershed? <sup>5</sup>	No
DWQ Designated High Quality or Outstanding Resource Water? <sup>5</sup>	Yes
Presence of Aquatic Natural Heritage Element? <sup>7</sup>	Yes
<p>1 Miles of impaired streams indicates the approximate number of stream miles within the local watershed that are rated as either partially supporting (PS) or not supporting (NS).</p> <p>2 Possible causes and sources of degradation indicates either point or nonpoint source pollution. Causes and sources include: 1) Habitat degradation (a notable reduction in habitat diversity or change in habitat quality--includes sedimentation, bank erosion, channelization, lack of riparian vegetation, loss of pools or riffles, loss of woody habitat, and stream bed scour.) 2) Agriculture (row crops and animal operations-- where cattle is noted, cattle were observed on site at the time of sampling or the watershed hosts many cattle farms) 3) Non-urban development (residential and /or commercial development outside urban areas).</p> <p>3 Stream on 303(d) List indicates whether the Targeted Local Watershed contains waters which are on the North Carolina's 2000 303(d) List (not yet approved by the US EPA).</p> <p>4 All or part of the watershed is designated by the DWQ as a Water Supply Watershed and is subject to management strategies designed to protect surface water supply.</p> <p>5 One or more streams in the watershed is designated by the DWQ as possessing special qualities including excellent water quality, native trout, critical habitat areas, or water supplies.</p> <p>6 DWQ has assigned one or more streams in the watershed as trout waters. Trout waters are protected for natural trout propagation and survival of stocked trout.</p> <p>7 The Natural Heritage Program has identified one or more unique aquatic species or habitat in this watershed.</p>	



**Figure 3  
Savannah  
River Basin  
Targeted  
Local Watershed  
10020  
Horsepasture River**



- Primary Roads
- County Boundaries
- DWQ High Quality/  
Outstanding Resource Waters
- Hydrography
- Local Watershed Boundaries



**Subbasin 02**



**Horsepasture River**



This map was produced on 12/11/01 by the North Carolina Division of Water Quality Wetlands Restoration Program. Data was provided by the North Carolina Center for Geographic Information and Analysis.  
The map is based on:  
Projection: Stateplane  
Zone: 4901  
Datum: NAD 83  
Spheroid: GRS1980  
Units: Meters

## **SECTION 5: CONTACT INFORMATION FOR THE SAVANNAH RIVER BASIN**

The NCWRP can implement restoration projects cooperatively with other state and federal programs as well as environmental groups. The NCWRP believes that integrating wetland or stream restoration with other projects such as livestock exclusion or stormwater management will often increase the overall water quality benefits of the project. In selecting Targeted Local Watersheds, the NCWRP considers completed and ongoing restoration efforts in the watershed to determine if there are opportunities to link NCWRP projects with these efforts through the watershed approach. Section C of the Savannah River Basinwide Water Quality Plan provides a comprehensive overview of current and future water quality initiatives and projects throughout the Savannah River Basin. The purpose of this section is to provide contact information for the projects and programs discussed in Section 4 of this document and for programs or initiatives underway in the Savannah River Basin that are potential building blocks for current and future NCWRP project efforts.

**Table 4:** Contacts for Federal water quality programs and initiatives in the Savannah River Basin.

ORGANIZATION	CONTACT	ADDRESS	PHONE	E-MAIL / WEB SITE
<b>Environmental Protection Agency Wetland Section</b>	Becky Fox	1349 Firefly Road Whittier NC, 28789	(828) 497-3531	<a href="mailto:fox.rebecca@epa.gov">fox.rebecca@epa.gov</a> <a href="http://www.epa.gov">www.epa.gov</a>
<b>Natural Resource Conservation Service</b>				<a href="http://www.nc.nrcs.usda.gov">www.nc.nrcs.usda.gov</a>
Clay County		PO Box 57 Community Service Bldg. Hayesville, NC 28904	(828) 389-9695	
Jackson County		Community Service Bldg., Suite 110 538 Scotts Creek Road Sylva, NC 28779	(828) 586-6344	
Macon County		Carolina Convience Center Bldg. 203 Sloan Road, Franklin, NC 28734	(828) 389-9695	
Transylvania County		Community Services Bldg. 203 East Morgan St. Brevard, NC 28712	(828) 884-3230	

**Table 5:** Contacts for Statewide water quality programs and initiatives in the Savannah River Basin.

ORGANIZATION	CONTACT	ADDRESS	PHONE	E-MAIL / WEB SITE
<b>Clean Water Management Trust Fund</b>	Tom Massey Western Field Representative	P.O. Box 595 Sylva, NC 28779	(828) 586-4133	tom.massie@ncmail.net
<b>Division of Soil and Water Conservation - District Offices</b> NC 27017				<a href="http://www.enr.state.nc.us/DSWC/">www.enr.state.nc.us/DSWC/</a>
Clay County		PO Box 57 Hayesville, NC 28904	(828) 389-9764	
Jackson County		Community Service Bldg., Suite 110 538 Scotts Creek Road Sylva, NC 28779	(828) 586-6344	
Macon County		Carolina Convention Bldg. 203 Sloan Road, Franklin, NC 28734	(828) 524-3311	
Transylvania County		Community Services Bldg. 203 East Morgan St. Brevard, NC 28712	(828) 884-3230	
<b>Division of Water Quality</b>				<a href="http://www.h2o.enr.state.nc.us">www.h2o.enr.state.nc.us</a>
Asheville Regional Office		59 Woodfin Place, Asheville, NC 28801	(828)-251-6208	
Basinwide Planning Program	Callie Dobson	1617 Mail Service Center Raleigh, NC 27699-1617	(919) 733-5083 ext. 583	<a href="mailto:Callie.Dobson@ncmail.net">Callie.Dobson@ncmail.net</a>
Section 319 Grant Program	Sean Groom	1617 Mail Service Center Raleigh, NC 27699-1617	(919) 733-5083 ext. 582	<a href="mailto:Sean.Groom@ncmail.net">Sean.Groom@ncmail.net</a> <a href="http://h2o.enr.state.nc.us/nps/319.htm">h2o.enr.state.nc.us/nps/319.htm</a>
Wetlands Restoration Program	George Norris Watershed Planner	1619 Mail Service Center Raleigh, NC 27699-1619	(919) 733-5312	<a href="mailto:George.Norris@ncmail.net">George.Norris@ncmail.net</a> <a href="http://h2o.enr.state.nc.us/wrp/index.htm">h2o.enr.state.nc.us/wrp/index.htm</a>

**Table 6:** Contacts for Local Water Quality Programs and Initiatives in the Savannah River Basin.

ORGANIZATIONS AND PROJECTS	CONTACT	ADDRESS	PHONE	E-MAIL / WEB SITE
<i>Chatooga Conservancy</i>	Executive Director Buzz Williams		(706) 782-6097	<a href="http://www.chatoogariver.com">http://www.chatoogariver.com</a>

## **References Cited**

North Carolina Department of Environment and Natural Resources (DENR), Division of Water Quality. "Savannah River Basinwide Water Quality Management Plan." July, 2001.

North Carolina Department of Environment and Natural Resources (DENR), Division of Water Quality. "Basin Assessment Report – Savannah River Basin" April, 2000

North Carolina Department of Environment and Natural Resources (DENR), Division of Water Quality. "Savannah River Basinwide Water Quality Management Plan." May, 1997.

North Carolina Natural Heritage Program, DENR, Division of Parks and Recreation. "Natural Heritage Program List of the Rare Animal Species of North Carolina." 1999.

North Carolina Natural Heritage Program, DENR, Division of Parks and Recreation. "Natural Heritage Program List of the Rare Plant Species of North Carolina." 1999.

North Carolina Wildlife Resources Commission, Division of Inland Fisheries. Draft Fisheries Management Plan for the Savannah River. June, 1998.

## APPENDIX 1

### COMPREHENSIVE LIST OF TARGETED LOCAL WATERSHEDS IN THE SAVANNAH RIVER BASIN

The following is the local watershed targeted by the NCWRP in the Savannah River Basin. Other agencies, individuals and private groups are encouraged to target their search for restoration sites within these local watersheds. The watershed codes are the fourteen-digit code for each local watershed in the state that has been designated by the USDA Natural Resources Conservation Service (NRCS).

DWQ Subbasin	Watershed Name	14 Digit Hydrologic Unit
03-13-02	Horsepasture River	03060101010020