



N.C. Ecosystem Enhancement Program



Restoring... Enhancing... Protecting Our State

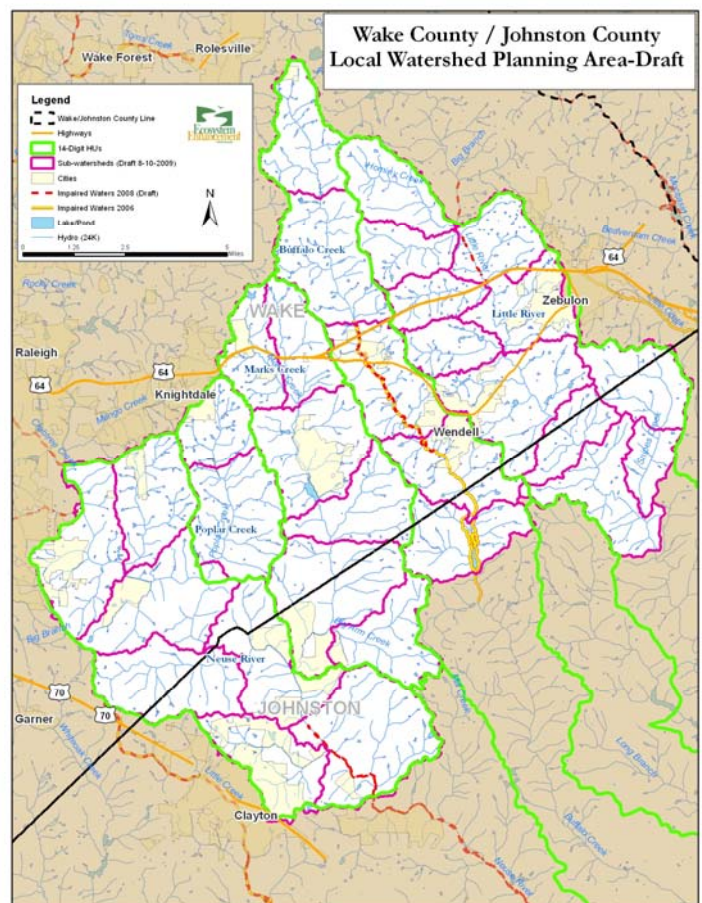
WAKE-JOHNSTON COLLABORATIVE LOCAL WATERSHED PLAN FACT SHEET

| |
|--|
| <p>Location: On the border of Johnston & Wake Counties, NC</p> <p>River Basin: Neuse</p> <p>Cataloging Unit: 03020201</p> <p>14-digit Hydrologic Units: 03020201100010, 03020201100020, 03020201100030, 03020201180020, and 03020201180050</p> <p>Counties: Johnston and Wake</p> |
| <p>Watershed Area: 144 square miles</p> <p>Planning Contacts: Kurt Smith—Wake County Watershed Management (919) 856-7447 or kwsmith@co.wake.nc.us Rob Breeding—Ecosystem Enhancement Program (919) 733-5311 or rob.breeding@ncdenr.gov</p> |
| <p>Participants: <i>Technical Advisory & General Advisory Committees</i></p> |
| <p>Cooperators Conducting the Watershed Assessment: Wake County Environmental Services, Ecosystem Enhancement Program, NC Division of Water Quality, NCSU Biological & Agricultural Engineering</p> |

Project Overview

In 2008, discussions amongst resource professionals in Wake County government and the Ecosystem Enhancement Program (EEP) revealed common watershed planning goals that included the need to restore impaired waters and protect threatened habitat. In early 2009, planners identified watersheds in eastern Wake County and western Johnston County that met these common criteria, while also contributing to independent organizational objectives. Thus began this Local Watershed Plan (LWP) initiative. The primary goal of the project is to develop a comprehensive watershed management and restoration strategy. The five project watersheds include Beddingfield Creek & adjacent portions of the Neuse River, Poplar Creek, upper Marks Creek, upper Buffalo Creek, and a portion of the Little River. Within these watersheds lie portions of several municipalities including Clayton, Knightdale, Wendell (entirely within), and Zebulon. Residential and commercial development continues to expand from these centers. Much of Buffalo Creek and a segment of the Neuse are designated as impaired waters by the NC Division of Water Quality due to poor biological communities.

Two advisory committees (technical and general) have been assembled to oversee the plan development. It will be based on EEP's LWP methodology (see *EEP LWP Process*). Four major products are anticipated: (1) a preliminary findings report, (2) a technical assessment of water quality, habitat and hydrologic conditions, (3) a final rehabilitation strategy, and (4) a project atlas. The final plan will incorporate the comprehensive interests of both stakeholders and project partners. The atlas will present stream & wetland restoration, enhancement & preservation projects, as well as stormwater & agricultural best management practices (BMPs) to be implemented by EEP, governments, and other organizations.



Project Schedule

DRAFT Schedule Coming Soon!

October 15, 2009: Technical Advisory Committee Meeting (time and location TBD)
November 19, 2009: General Advisory Committee Meeting (time and location TBD)

Working Documents

DRAFT General Advisory Committee Meeting Summary (August 12, 2009)

EEP Planning Presentation (Michele Drostin)

Wake-Johnston Plan Overview (Kurt Smith)

DRAFT Benthic Macroinvertebrate Community Report (Dave Penrose)

DRAFT Local Watershed Planning Area Map (GIS Team)

DRAFT Water Quality Monitoring Plan (Dan Line & Steve Kroeger)

Final Documents

Preliminary Findings Report Coming Soon!