

LOCAL WATERSHED PLAN SUMMARY

Lower Yadkin – Upper Rocky River, Phase 2

River Basin: Yadkin-Pee Dee

Catalog Unit: 03040105

Location: **14-digit HUs:** 020010 (Coddle Creek); 010030 (mainstem Rocky River); 010040 (Mallard Creek); and 010050 (Reedy & Back Creeks)

Counties: Cabarrus, Iredell, Mecklenburg, Rowan

Watershed Area: (mi²) 200

Planning Contact:

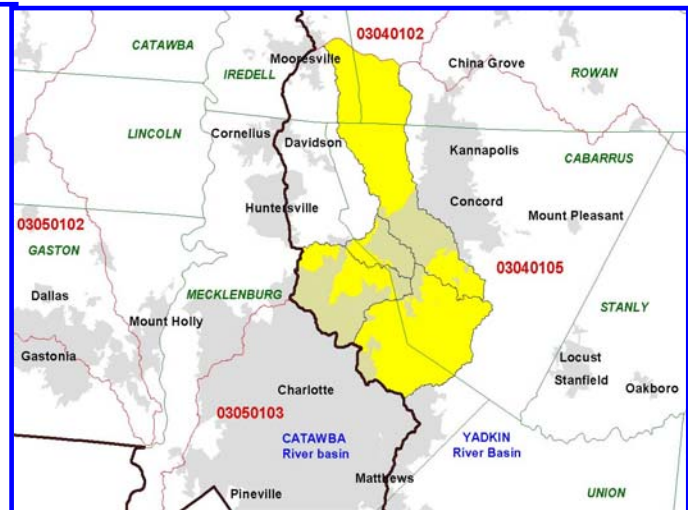
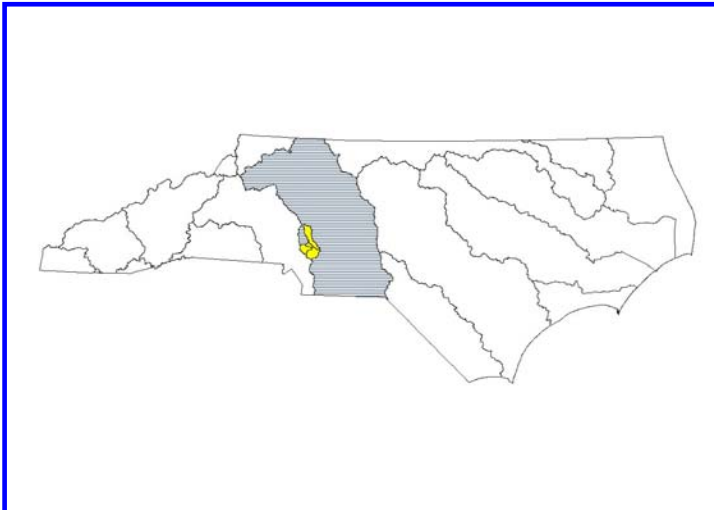
Hal Bryson (919) 715-745 hal.bryson@ncmail.net

Participants:

County Planners; County Soil & Water Districts and NRCS; Municipal planners & storm water staff; Local/regional Land Trusts; Yadkin-Pee Dee River Basin Assoc.; Wildlife Resources Commission; NC Div. Forestry; DENR Regional Office staff

Watershed Assessment Contractor:

Mactec Engineering, Inc., Charlotte & Raleigh
Richard Darling, Project Manager (919) 876-0416



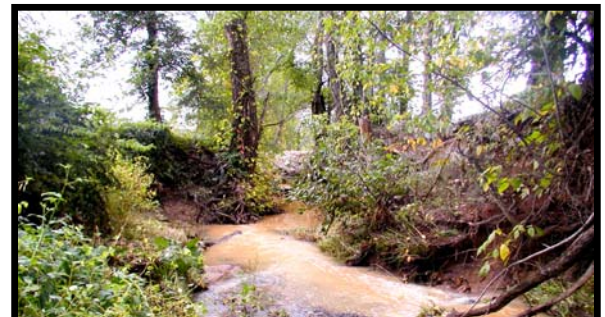
Project Overview

This effort represents a geographic expansion of the Phase 1 Local Watershed Planning project conducted by NCWRP in the lower Yadkin-Pee Dee region. The Phase 1 LWP addresses watershed conditions in the Clarke Creek and upper Rocky River 14-digit HUs; the final watershed management plan from this initial effort is scheduled for completion by October 2003. The Phase 2 effort will address the four additional HUs noted above. Together with the contiguous Phase 1 HUs, these comprise the entire upper Rocky River drainage system (and all of DWQ Subbasin 11 in the Yadkin basin). These watersheds include a mix of urban and rural land uses, stream reaches considered "impaired" by the Division of Water Quality (DWQ), and several planned NCDOT Transportation Improvement Projects (TIPs).

Mactec will be assessing threats to three basic categories of watershed functions: water quality; habitat; and hydrology. Watershed management plans will be developed with assistance from local stakeholders, including the identification of priority subwatersheds and the selection of optimal restoration project sites. Watershed Education for Communities and Officials (WECO) will be managing the stakeholder involvement efforts and public meetings. DWQ staff will assist in collecting & interpreting water quality and habitat data.

Project Schedule

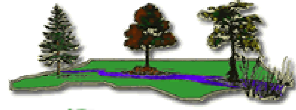
Initial Characterization: compilation/review of existing data January – August 2003
 Preliminary Findings & Recommendations Report - September 2003
 Public Meeting #1 - November 2003
 Detailed Field Assessment in Priority Areas Fall 2003 – Spring 2004
 Watershed Improvement Report with C.U.-wide screening -May 2004
 Build-out Modeling (Future Conditions) Report - June 2004
 Public Meeting #2 - Summer 2004
 Final Watershed (& Sub-watershed) Management Plans July – August 2004



**Afton Run in Dorton Park, Concord
(degraded tributary to Coddle Creek)**

NORTH CAROLINA

Wetlands Restoration Program



Lower Yadkin Local Watershed Planning Subbasin 11 - Phases 1 and 2 LWP

