

N.C. Ecosystem Enhancement Program

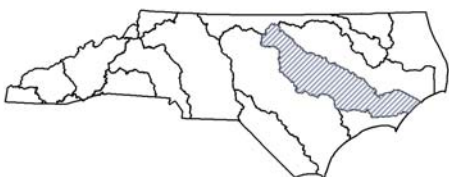


Restoring... Enhancing... Protecting Our State

ELLERBE CREEK LOCAL WATERSHED PLAN Fact Sheet

Location:	Durham, NC
River Basin:	Neuse
Cataloging Unit:	03020201
14-digit Hydrologic Unit:	03020201050010
County:	Durham
Watershed Area	36.7 square miles
Planning Contact:	Michele Drostin -- Ecosystem Enhancement Program (EEP) (919) 715-6817 or Michele.drostin@ncdenr.gov
Participants:	City of Durham Storm Water Services, Triangle J Council of Governments, UNRBA
Contractor Hired for Watershed Assessment:	Phase I-III: Tetra Tech Phase IV: PBS&J and UNRBA

Neuse River Basin



Project Overview Ellerbe Creek was selected for the focus area for the watershed assessment and restoration planning based on several reasons. In 1998, the North Carolina Wetlands Restoration Program, now the Ecosystem Enhancement Program (EEP) in cooperation with the UNRBA received an Environmental Protection Agency Wetlands Program Development Grant. One of the grant deliverables was development of the Upper Neuse River Basin Watershed Management Plan. The intent of this plan was to analyze current and future water quality conditions and strategies to address water quality concerns. During the development of this plan, municipal and county government representatives identified water quality within water supply reservoirs as their highest priority along with limits to recreational use and habitat protection as other priorities. Based on these ranked priorities, the UNRBA and the NCWRP determined that the Ellerbe Creek watershed, located within the Upper Neuse River Basin, was an appropriate candidate for a Local Watershed Plan. The Ellerbe Creek LWP will work to address Ellerbe Creek's long-term poor water quality and protect water quality in the Falls Lake water supply reservoir.

Project Schedule This LWP was initiated in February and completed in December 2003. EEP began an implementation effort in partnership with the county, UNRBA, the City of Durham and other agencies in spring 2008. A project Atlas was completed in September 2009. Implementation efforts are expected to continue through 2010.

Current EEP Projects

- Ellerbe Creek (Hillandale) #127 – stream restoration
- Ellerbe Creek (Northgate Park) #272 – stream restoration
- Goose Creek #147 – stream restoration

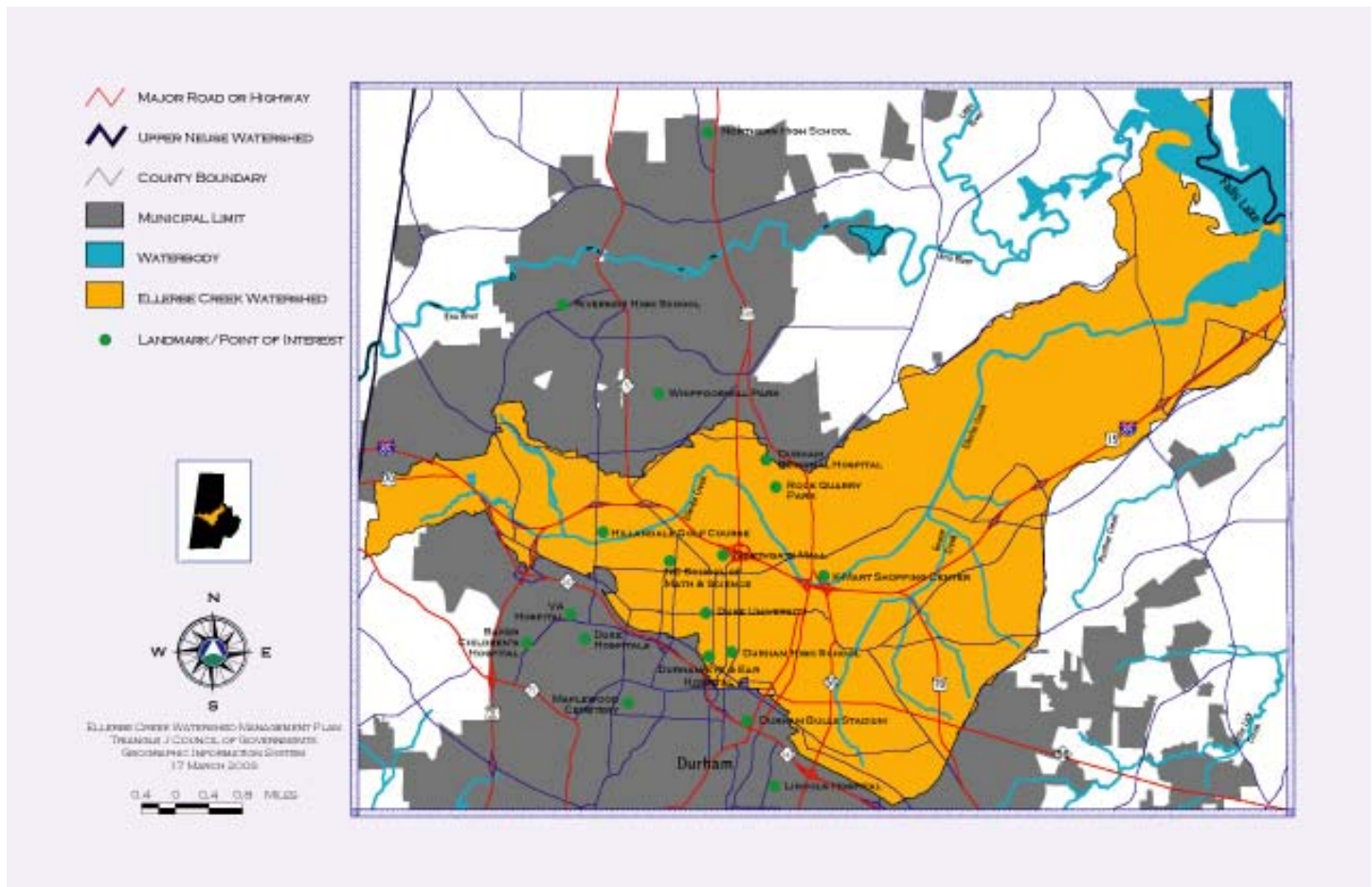
Other Watershed Projects

- Ellerbe Creek Watershed Association – land acquisition CWMTF
- Ellerbe Creek Watershed Association – stream project CWMTF
- City of Durham – Ellerbe Creek Watershed Mgmt Implementation Plan
- NCSU – Floating Wetland BMP – 319 grant
- Durham SWCD – Blue Devils Venture green roof
- City of Durham – stream restoration project (pending) – EPA/USACE grant

Documents

[Ellerbe Creek Local Watershed Plan](#)

[Ellerbe Creek Project Atlas](#)



1652 Mail Service Center, Raleigh, NC 27699-27699-1652 / 919-715-0476 / www.nceep.net

