

N.C. Ecosystem Enhancement Program

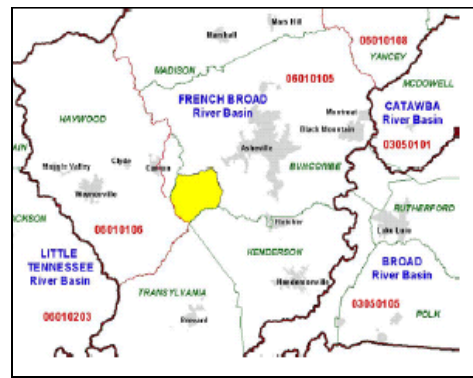
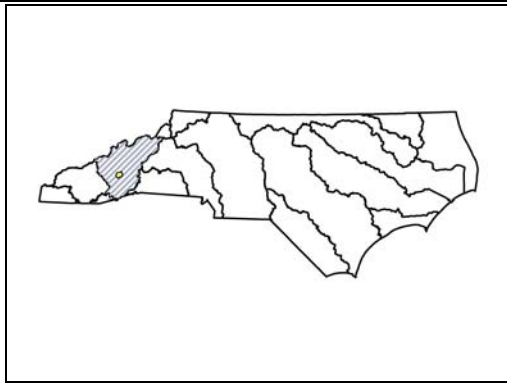


Restoring... Enhancing... Protecting Our State

SOUTH HOMINY CREEK LOCAL WATERSHED PLAN

FACT SHEET

Location:	Near Asheville, NC
River Basin:	French Broad
Cataloging Unit:	06010105
14-digit Hydrologic Units:	06010105060020
Counties:	Buncombe
Watershed Area	38 square miles
Planning Contact:	Andrea Leslie - Ecosystem Enhancement Program (828) 337-3455 or Andrea.Leslie@ncdenr.gov
Participants:	Buncombe County NRCS, SWCD, USFS, NCWRC
Contractor Hired for Watershed Assessment	Buck Engineering



Project Overview

The 38 square mile South Hominy Creek watershed was selected as a focus area based on previous 303(d) listing of South Hominy Creek, degradation of aquatic habitat, and recommendations of local resource professionals. It is in the Candler area, characterized by wide floodplains and steep forested slopes. Land use is a mix of National Forest and private forest, pasture, hay, limited row crops, and increasing residential development.

Intensive field and GIS assessments were performed to describe morphology, habitat, water quality, and biological communities of watershed streams. The functions of each stream and larger assessment areas (see figure on page 2) were characterized for hydrology, water quality, and habitat. Generally, those areas draining private and public forested lands (Pisgah Highlands and Western Highlands) are functioning at high levels. All other areas except the Northern Coves were functioning minimally (functioning at risk). The Northern Coves is functioning at risk for hydrology and habitat, but not functioning for water quality, as this area was characterized by a degraded biological community, high nutrient and fecal coliform bacteria levels, and a large amount of residential development.

Major stressors for streams in the watershed are channelization; excess sedimentation from unpaved roads and driveways, stream bank erosion, and eroding uplands; localized nutrient and fecal coliform bacteria pollution; and lack of adequate riparian vegetation.



A Technical Advisory Committee composed of local natural resource and planning professionals identified management strategies and priority project areas. A number of strategies were named in the watershed plan to address these stressors and to protect highly functioning streams:

- A. Implement priority stream and wetland restoration projects
- B. Encourage low impact development techniques for future development
- C. Implement agricultural and other plan-identified best management practices
- D. Plant riparian buffers on prioritized stream reaches
- E. Preserve high priority forested headwater areas
- F. Monitor changes after project implementation

Project Schedule

An initial characterization of the watershed was finalized in February 2004, the Watershed Assessment Report was completed in May 2005, and Prioritized Management Recommendations were completed in November 2006. These documents were brought together to form the Local Watershed Plan in January 2006. In 2006, the watershed team began outreach to implement priority restoration, enhancement, and preservation projects with interested landowners.

Local Watershed Plan
[Executive Summary \(12 mb\)](#)
[Executive Summary without figures \(< 1 mb\)](#)
[Preliminary Findings & Recommendations Report](#)
[Field Assessment and Functional Status Report](#)
[Appendix 1](#)
[Appendix 4](#)
[Appendix 5](#)
[Prioritized Management Recommendations](#)
[Findings and Recommendations Summary](#)

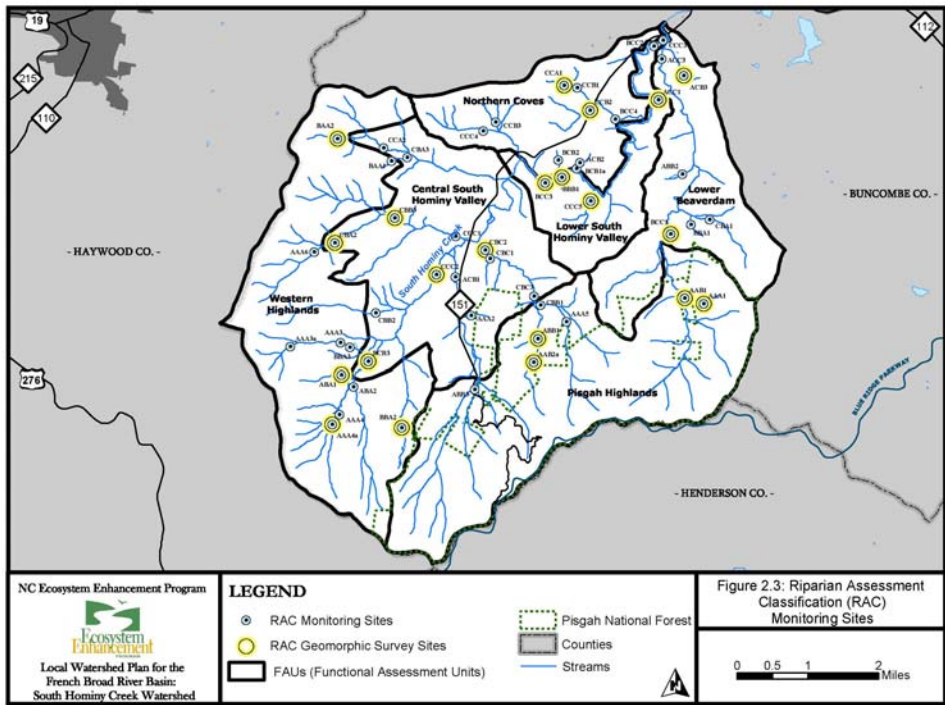


Figure 2.3: Riparian Assessment Classification (RAC) Monitoring Sites

