

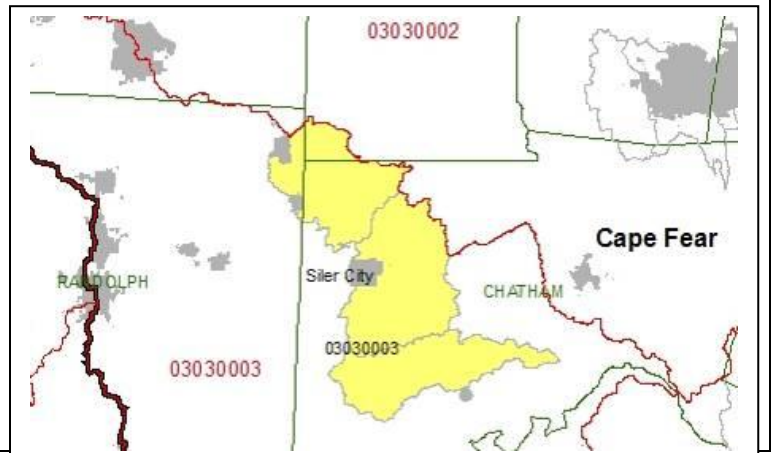
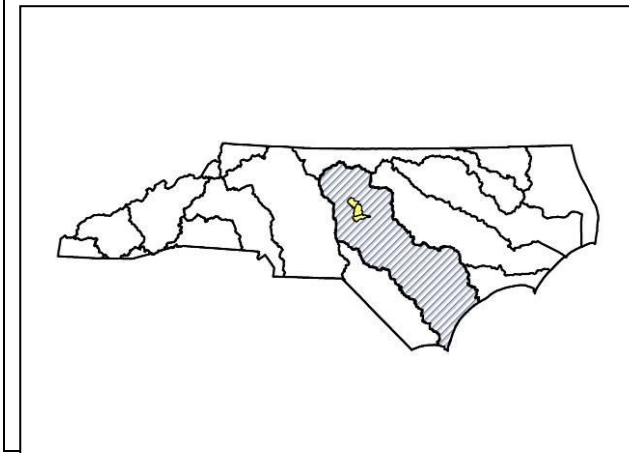
N.C. Ecosystem Enhancement Program



Restoring... Enhancing... Protecting Our State

UPPER AND MIDDLE ROCKY RIVER LOCAL WATERSHED PLAN FACT SHEET

Location: River Basin: Cataloging Unit: 14-digit Hydrologic Units:	Siler City, NC Cape Fear 03030003 03030003070010 (upper Rocky R.), 03030003070020 (middle Rocky R.) and 03030003070050 (Bear Creek)
Counties: Watershed Area:	Chatham, Alamance and Randolph 177 square miles
Planning Contact:	Deborah Amaral, Phone: 919-715-3466 Email: Deborah.Amaral@ncdenr.gov
Participants:	Local government staff & resource professionals (e.g., county soil & water conservation district staff, city & county planners), regional land trust and COG representatives
Contractor Hired for Watershed Assessment:	Tetra Tech, Inc., Research Triangle Park, NC Brian Burkhardt, Project Manager (919) 485-8278



Project Overview

In the summer of 2004, EEP initiated a Local Watershed Plan (LWP) in the upper Rocky River based on continuing high needs for compensatory mitigation in this Cataloging Unit and a screening for promising restoration sites. This drainage system includes northwestern Chatham County (but includes portions of Randolph and Alamance counties), an area encompassing upper Rocky River mainstem, North Prong Rocky River, Greenbriar Creek, Varnell Creek, Loves Creek, Tick Creek, Bear Creek and others. Based on poor biological ratings, 14.4 miles of Tick and Loves creeks are listed as impaired waters by the State's DWQ. Urban and agricultural runoff, combined with municipal discharges from Siler City, are DWQ's cited stressors in these streams.

A technical advisory team consisting of local resource professionals and municipal staff from the counties and towns in the planning area was formed to help guide the watershed assessment and plan development work. This team also helped identify optimal watershed project sites with cooperative landowners for the



establishment of long-term conservation easements. Watershed projects identified include traditional stream and stream buffer restoration/enhancement sites, wetlands and buffer preservation sites, and sites for the implementation of urban stormwater or agricultural best management practices (BMPs).

Project Status

The watershed plan is complete. Reports on the project include The *Preliminary Findings Report* from February 2005 and the *Detailed Assessment and Targeting of Management Report* from May 2005. This report details recommendations related enhanced protections for perennial and intermittent streams; erosion and sediment control guidance; improved maps for streams and floodplains; and sites for peservation, restoration and BMP installation.

LWP Reports
[Preliminary Findings Report \(7 MB\)](#)
[Detailed Assessment & Management Report \(4 MB\)](#)
[Summary of Findings \(0.1 MB\)](#)

The project has entered into its Phase IV. Mitigation needs in the CU have been satisfied mostly through the removal of Carbonton Dam in 2005 on the Deep River. Nevertheless, EEP has plans or been able to restore 4 tributaries in this LWP including restoration on Bear Creek (4,800 ft. of stream and 1 ac. of wetland), Greenbrier Creek (11,000 ft. of stream), Tick Creek (3,000 ft.) and a tributary to Rocky River (1,100 ft.). In addition to these activities, NC State University’s Watershed Education for Communities and Officials (WECO) are working with a stakeholder group in the area to help protect Tick Creek and the Rocky River. Information on the project can be found online at <http://www.ces.ncsu.edu/depts/agecon/WECO/rocky/>.

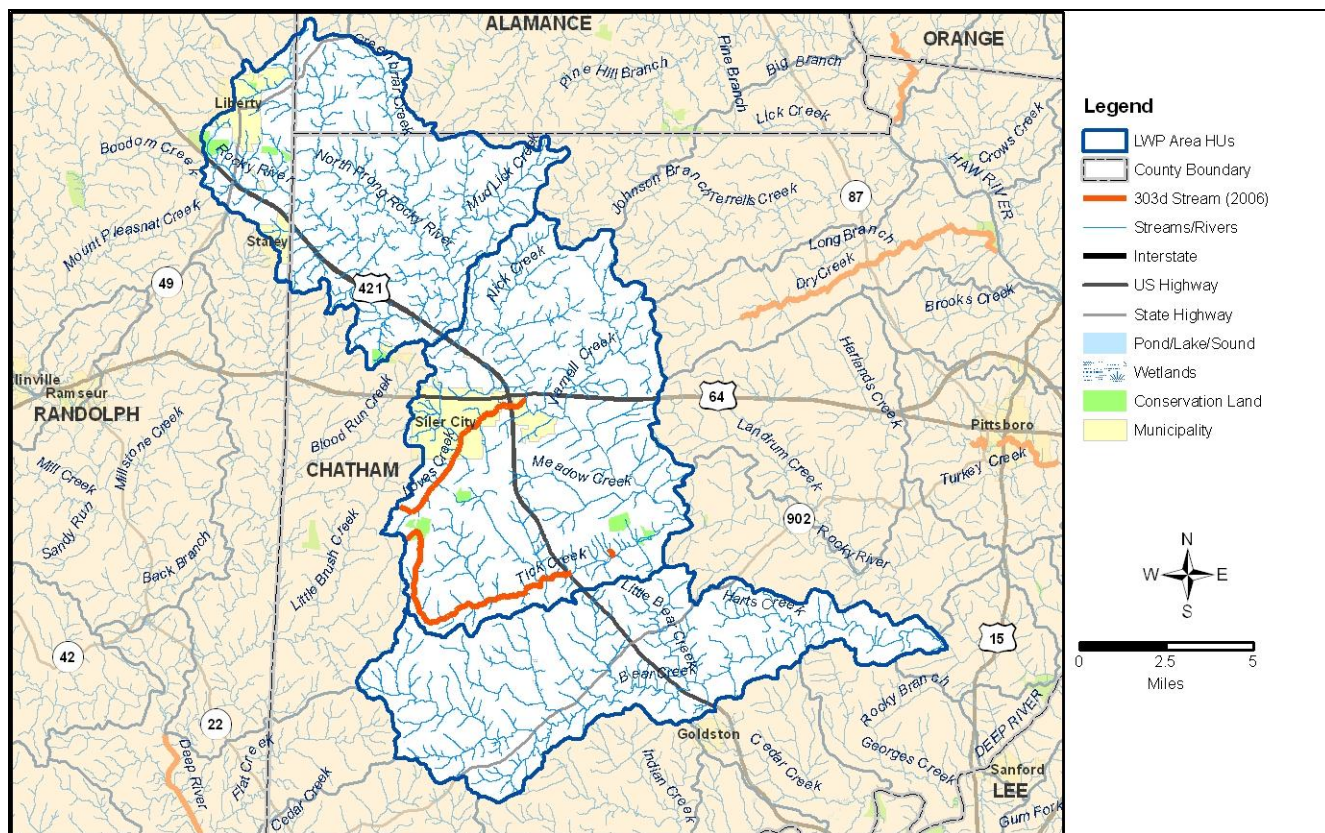


Figure 1. Local Watershed Plan Area.

