

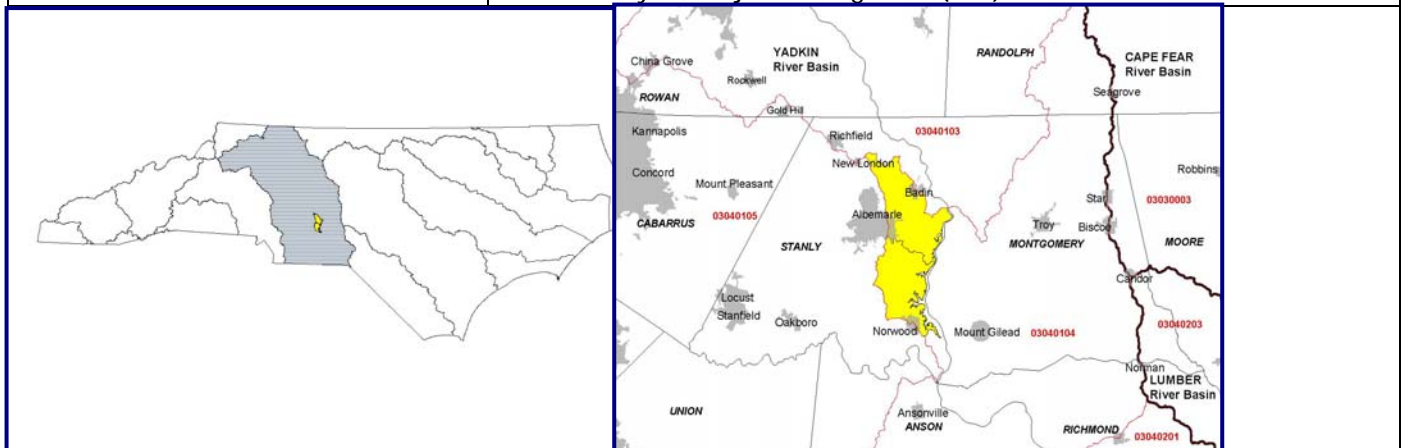
N.C. Ecosystem Enhancement Program



Restoring... Enhancing... Protecting Our State

MOUNTAIN/LITTLE MOUNTAIN CREEKS LOCAL WATERSHED PLAN FACT SHEET

Location:	Near Albemarle, NC
River Basin:	Yadkin-Pee Dee
Cataloging Unit:	03040104
14-digit Hydrologic Units:	03040104010010 (Mtn. & Little Mtn. Creeks) and 03040104010020 (Jacobs Creek & others)
County:	Stanly
Watershed Area:	67.6 square miles
Planning Contact:	Anjie Ackerman – EEP anjie.ackerman@ncdenr.gov or 919-715-1950
Participants:	To be determined -- likely to include local government staff, resource professionals, and regional land trusts...
Contractor Hired for Watershed Assessment	HDR, Inc., Raleigh, NC Marshall Taylor, Project Manager (919) 785-1118



Project Overview

Although both these watershed are still relatively undeveloped, they show evidence of increasing water quality and habitat degradation associated with new commercial and residential development around the towns of Albemarle, Badin and Norwood. A preliminary screening assessment indicates that the Mountain Creek HU is one of the most at-risk watersheds in the entire C.U., in terms of water quality impairment and riparian buffer condition. The entire length of Little Mountain Creek is 303(d)-listed as an impaired water body by the Division of Water Quality (DWO). Livestock access to streams is noted as another issue in portions of these watersheds. There are three major NCDOT TIPs planned within these watersheds. In terms of their resource assets, these HUs include water supply watershed areas and habitat for rare or threatened species.

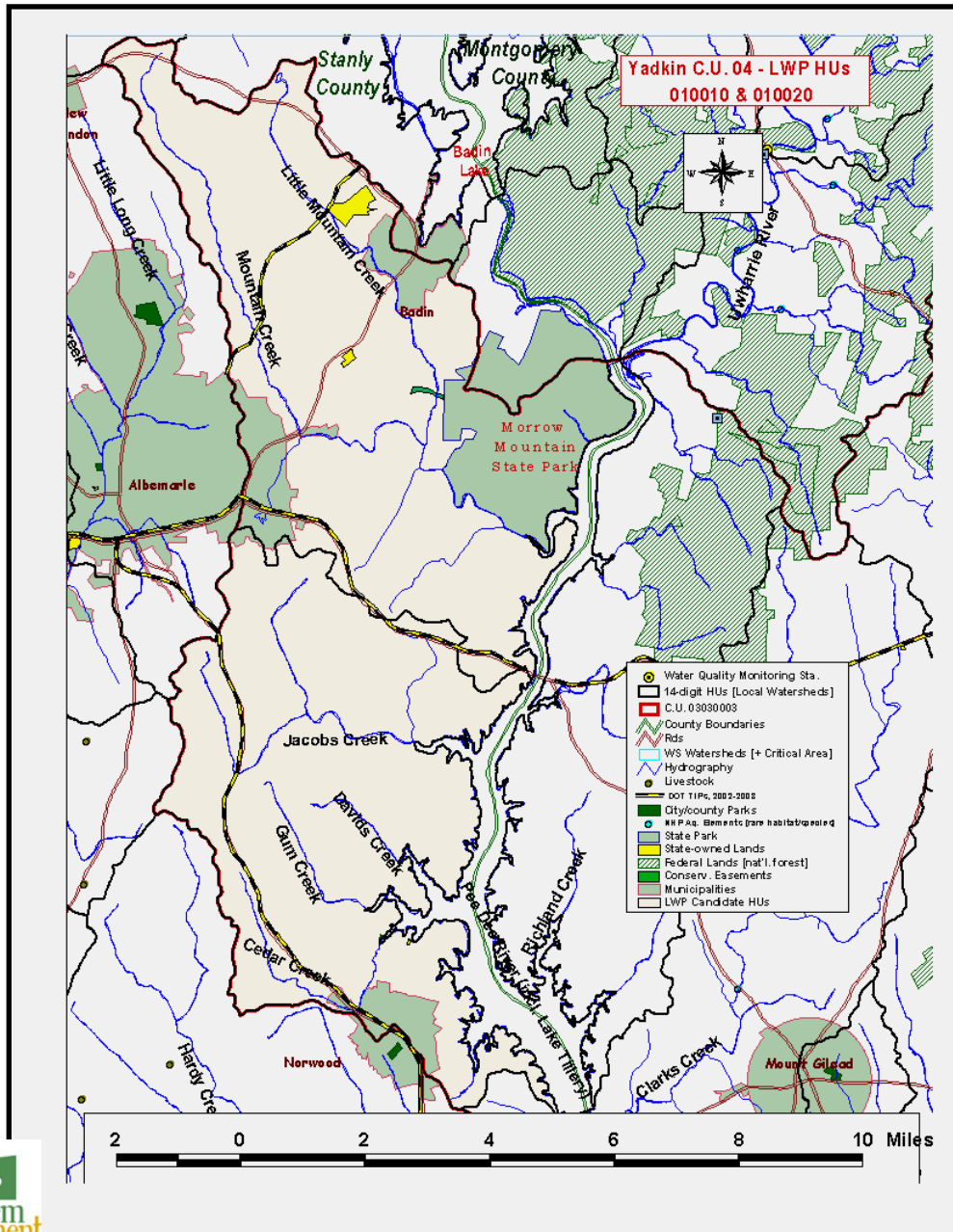
HDR Engineering conducted the Phase I watershed characterization for these watersheds, including compilation and evaluation of existing watershed data (with assistance from the DWQ Watershed Assessment Team), general field surveys of watershed conditions, delineation of subwatersheds, C.U.-wide screening for stream and wetlands restoration opportunities, specific monitoring recommendations for the collection of additional biological and physical/chemical water quality data, preliminary identification of high-priority subwatersheds, and the scoping of detailed field assessments & modeling for subsequent phases of the LWP effort.

Project Schedule

HDR began their Phase 1 characterization work in late July 2003 and the *Preliminary Findings & Recommendations Report* was finalized in March 2004. Since then this project has been placed "on hold" indefinitely

Documents

[Preliminary Findings and Recommendation Report March 2004](#)



1652 Mail Service Center, Raleigh, NC 27699-27699-1652 / 919-715-0476 / www.tceep.net

