

N.C. Ecosystem Enhancement Program



Restoring... Enhancing... Protecting Our State

MORGAN CREEK LITTLE CREEK LOCAL WATERSHED PLAN Fact Sheet

Location Cities:	Chapel Hill, Carrboro, Durham
River Basin:	Cape Fear
Cataloging Unit:	03030002
14-digit Hydrologic Units:	03030002060100, 03030002060070, 03030002060080
County:	Orange, Durham, Chatham
Watershed Area:	74.5 square miles
Planning Contact:	Deborah Amaral, Phone: (919) 715-3466 E-Mail: Deborah.Amaral@ncdenr.gov
Participants:	Local governments & resource professionals; Planning process was facilitated by Cape Fear River Assembly
Watershed Assessment Contractor	Tetra Tech, Inc.

<p>Planning Area</p> <p>Cape Fear Basin</p>	<p>NEUSE River Basin</p> <p>CAPE FEAR River Basin</p> <p>03030002</p> <p>03030003</p> <p>03020201</p>
---	---

Project Overview

This watershed was selected based on several 303(d) listed water bodies, urban runoff, fecal coli form bacteria, sediment, low dissolved oxygen and habitat degradation issues. The watersheds in this Local Watershed Plan (LWP) drain to B. Everett Jordan Reservoir, a drinking water supply designated as a Nutrient Sensitive Water. These watersheds also contain Natural Heritage Program Significant Natural Heritage Areas that are stressed due to increased urban development. A stakeholder team was established in October 2002 and met bi-monthly until its completion in December 2004.

LWP Project Activity

While the EEP funded planning process is complete, the Towns of Carrboro and Chapel Hill received a Section 319 grant to partner on a initiative to improve the biological condition of Bolin Creek, a sub-watershed of Little Creek. More information on this initiative can be found at: (<http://www.townofcarrboro.org/pzi/Env/Water/bcwrt.htm>).

EEP has been actively implementing projects identified during the LWP. EEP has completed constructing a restoration project on Chapel Creek (1,400 ft.) and preserved over 4,500 feet of stream and 19 acres of floodplain wetland in the LWP. The program will continue to support implementation of LWP projects and recommendations.

Documents & Plan Materials (online at www.nceep.net/services/lwps/Morgan_Creek/morgan.htm)

<i>Morgan and Little Creek Plan Summary (4mb)</i>	<i>Targeting of Management Report (8mb)</i>
<i>Preliminary Findings Report (5mb)</i>	<i>Meeting Materials</i>
<i>Detailed Assessment (5mb)</i>	<i>Plan Presentation (22mb)</i>

Watershed Planning Area

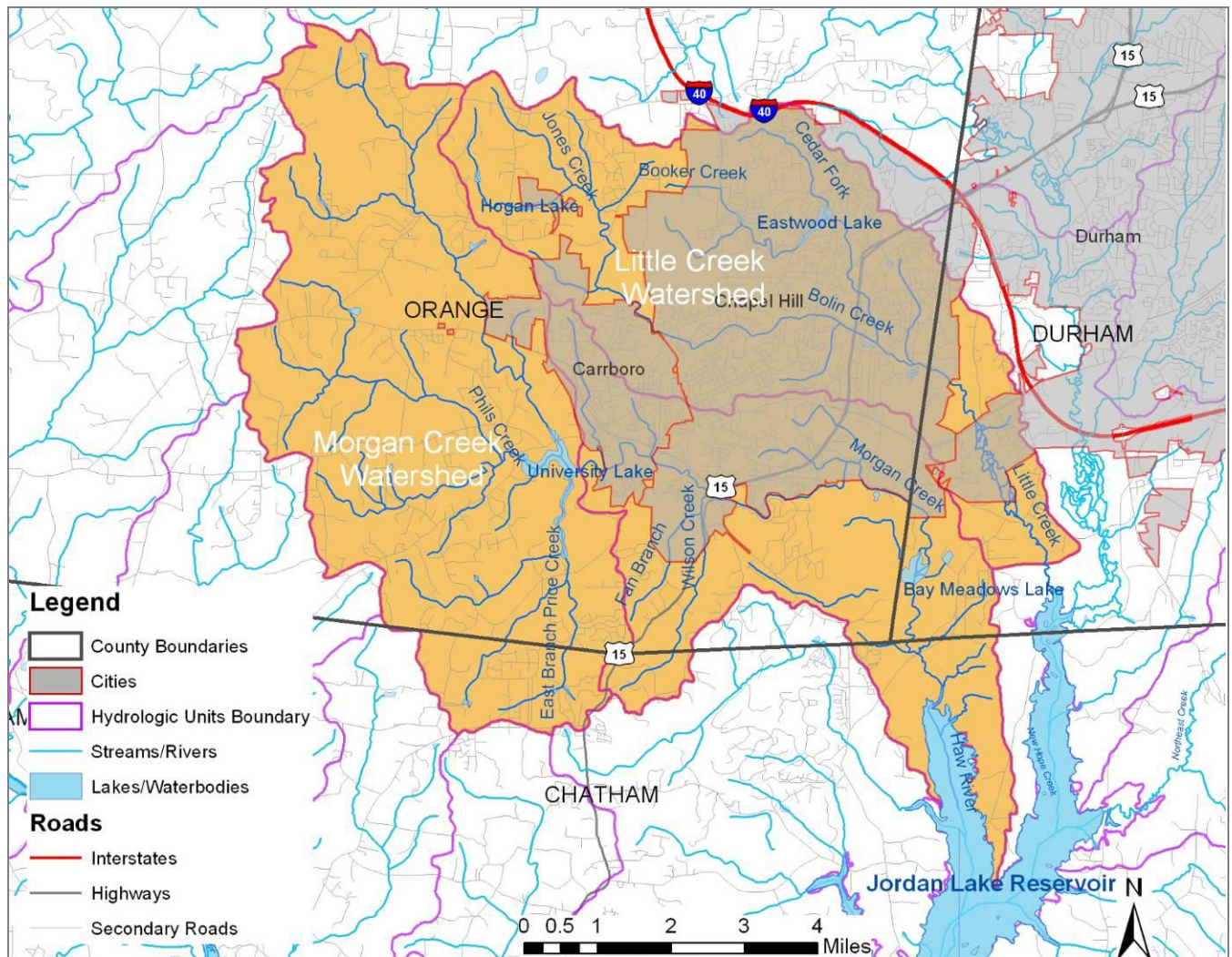


Figure 1. Morgan and Little Creek Planning Area.