

LOCAL WATERSHED PLAN SUMMARY

Lower Creek Local Watershed Plan

Location: **River Basin:** Catawba
CU: 03050101
HU: 03050101080010
 03050101080020
Counties: Burke, Caldwell

Watershed Area : 99 sq. miles

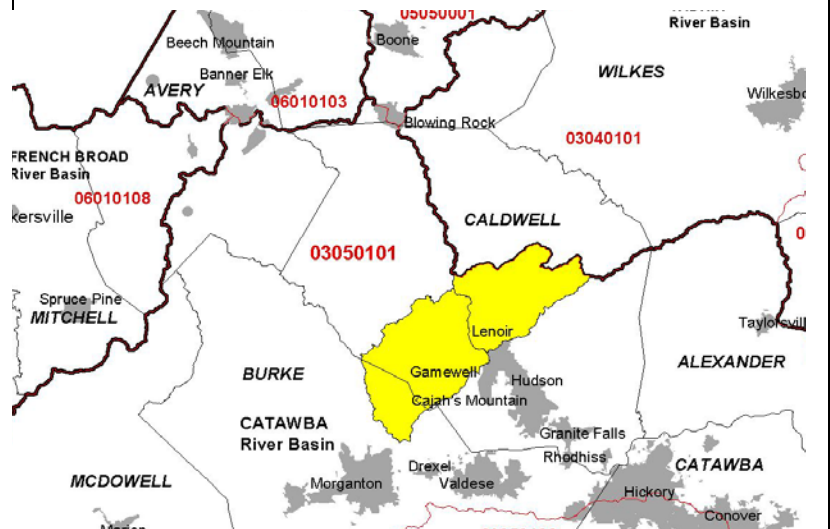
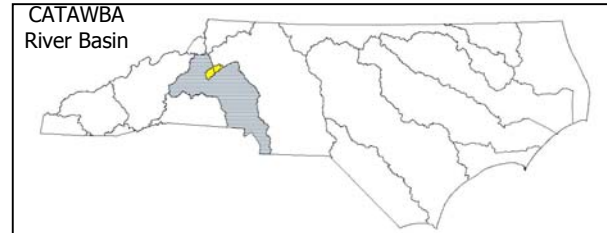
Planning Contact: Kristin Cozza - NCWRP
 (704) 572-0955
Kristin.Cozza@ncmail.net

Stakeholder Involvement: To be determined

Watershed Assessment: Ben Leatherland, MacTech
 (704) 357-5610
blleatherland@mactec.com

Andrea Leslie – NCDWQ
 (828) 251-6208
Andrea.Leslie@ncmail.net

Location Maps



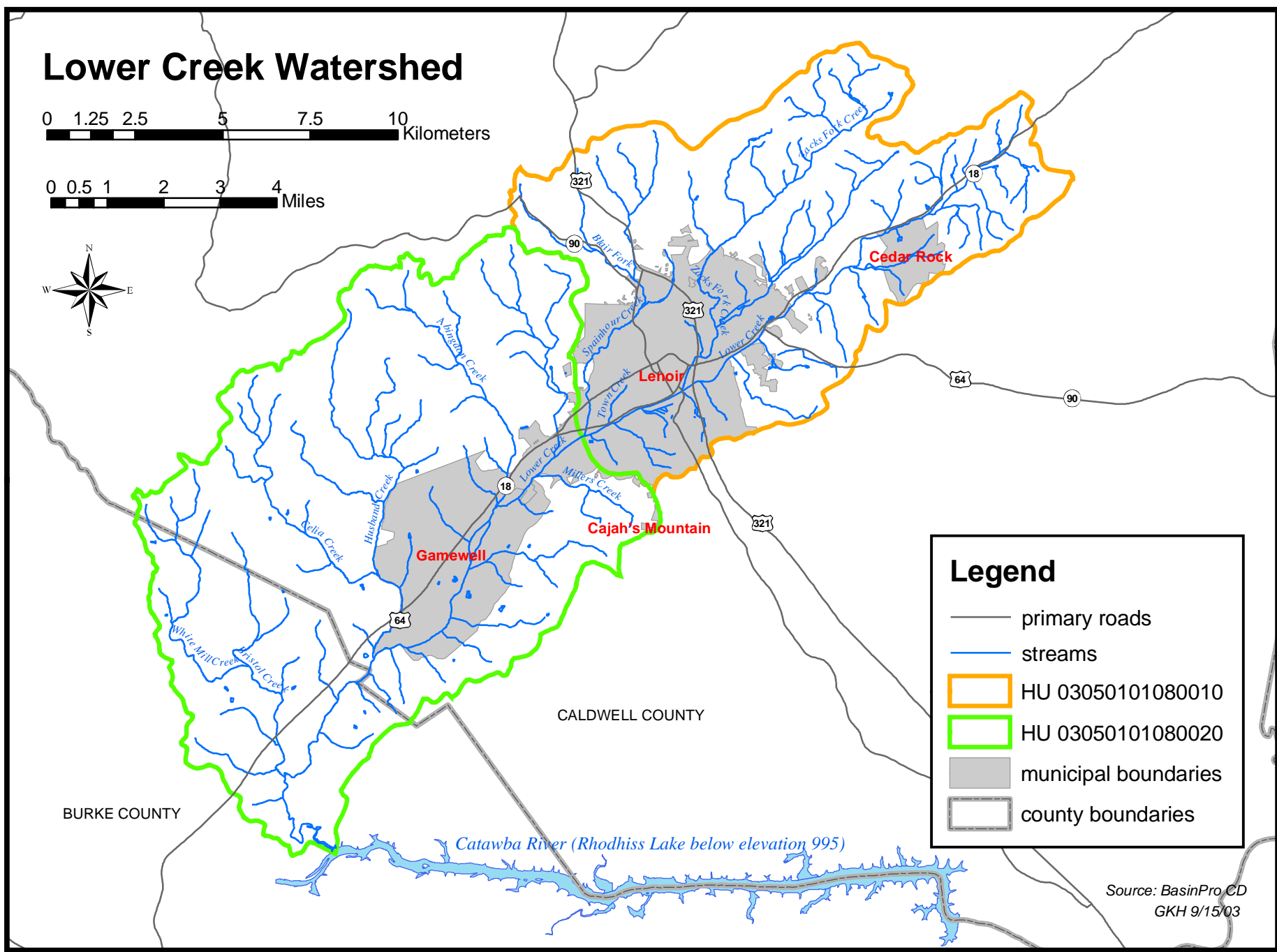
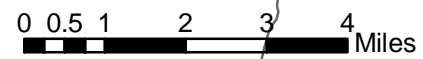
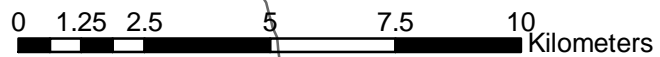
Project Overview

The Lower Creek watershed is located in Burke and Caldwell Counties and includes the towns of Lenoir and Gamewell. The watershed area is approximately 99 sq miles. The upper reach of Lower Creek is currently rated by the Division of Water Quality as fully supporting; however, the entire length of Lower Creek below the junction of Zack's Fork (approximately 12.7 miles) is listed on North Carolina's 2002 303(d) impaired streams list as partially supporting. Zack's Fork and Spainhour Creek are major tributaries within the Lower Creek Watershed which are also listed as partially supporting on the 303(d) list. Potential causes of impairment are habitat degradation and turbidity; and urban runoff, non-urban development, and municipal point sources. The purpose of this planning study is to characterize existing watershed conditions including land use and potential point and non point sources of pollution and to recommend specific restoration strategies to address these problems.

Project Schedule

The preliminary watershed characterization will be completed in January 2004. The schedule for the detailed watershed assessment and water quality monitoring has yet to be determined.

Lower Creek Watershed



Legend

- primary roads
- streams
- HU 03050101080010
- HU 03050101080020
- municipal boundaries
- county boundaries

BURKE COUNTY

CALDWELL COUNTY

Catawba River (Rhodhiss Lake below elevation 995)

Source: BasinPro CD
GKH 9/15/03