

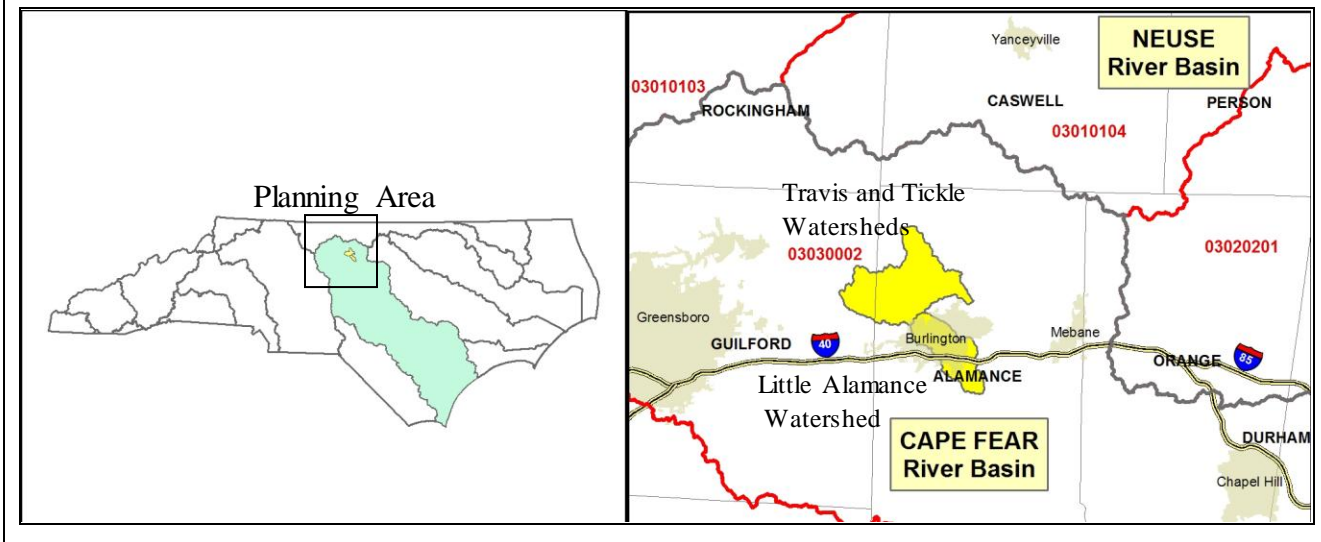
N.C. Ecosystem Enhancement Program



Restoring... Enhancing... Protecting Our State

LITTLE ALAMANCE, TRAVIS & TICKLE CREEKS LOCAL WATERSHED PLAN Fact Sheet

Location:	Burlington and Graham area
River Basin:	Cape Fear (Haw River)
Cataloging Unit:	03030002
14-digit Hydrologic Units:	03030002040110, 03030002030010
Counties:	Alamance, Guilford
Watershed Area:	51 square miles
Planning Contact:	Deborah Amaral, Phone: (919) 715-3466 E-Mail: Deborah.Amaral@ncdenr.gov
Participants:	Local governments & resource professionals; planning process is managed by Piedmont Triad Council of Governments (PTCOG)
Contractor Hired for Watershed Assessment:	Contact: Cy Stober (PTCOG) Phone (336) 294-4950, E-Mail: cstober@ptcog.org
Project Website:	http://www.ptcog.org/planning_services/environmental_planning/water_resources/water_quality/eep.php



Project Overview

In 2000, Little Alamance Creek was listed as impaired by the NC Division of Water Quality due to poor stream biological ratings. The Creek's challenges include poor water quality, degraded biology, loss of riparian vegetation, bank erosion and urban runoff. In Travis and Tickle creeks, poor stream biologic conditions were noted as well, potentially to the level of receiving an impaired waters rating. This watershed suffers from by poor riparian habitat, impacts from suburban development, and agricultural runoff. Together, these watersheds were studied from 2006 to 2008 for the Little Alamance, Tickle and Travis creeks Local Watershed Plan (LWP).

The watersheds drain to the Haw River, a major recreational and cultural asset for the region, and subsequently to Jordan Lake, a drinking water supply that is also a nutrient sensitive water.



This Little Alamance, Tickle, and Travis creeks watershed study is complete and the final report highlights several recommendations to help improve water quality and protect area streams. These include:

- Protecting vegetation along stream banks;
- Better managing stormwater runoff;
- Enhanced citizen education on stream protection;
- Implementation of several stream repair projects; and
- Conservation of rural lands.

LWP Reports

[Watershed Characterization \(13 MB\)](#)

[Detailed Assessment Report \(5 MB\)](#)

[Final Plan and Project Atlas \(11 MB\)](#)

[Summary of Findings \(0.1 MB\)](#)

Additional project materials can be found online at:

http://www.ptcog.org/planning_services/environmental_planning/water_resources/water_quality/eed.php

Project Status

With the completion of the watershed plan, the project moves into its implementation phase. EEP is investigating areas identified in the LWP as needing repair along with conservation opportunities. Based on this work, a number of projects are either planned or constructed. These include stream restoration projects at Glen Raven (4,000 ft.), two projects on Unnamed Tributaries (UTs) to the Haw River (10,100 ft. and 2,000 ft.), two projects on UTs to Altamahaw Creek (3,200 ft. and 1,500 ft.) and a proposed a project on Little Alamance at Burlington's City Park (2,800 ft.).

Other LWP recommendations, such as citizen education and trash removal, will be implemented by municipal stormwater programs or, regionally, through initiatives by organizations such as PTCOG, which has received additional funding to form the Little Alamance Restoration Alliance.



Figure 1. Streambank erosion at Burlington's City Park contributes to pollution in Little Alamance Creek. This site has been targeted for a stream restoration project.



Figure 2. A goal of the plan is develop strategies to improve stormwater management.