

N.C. Ecosystem Enhancement Program

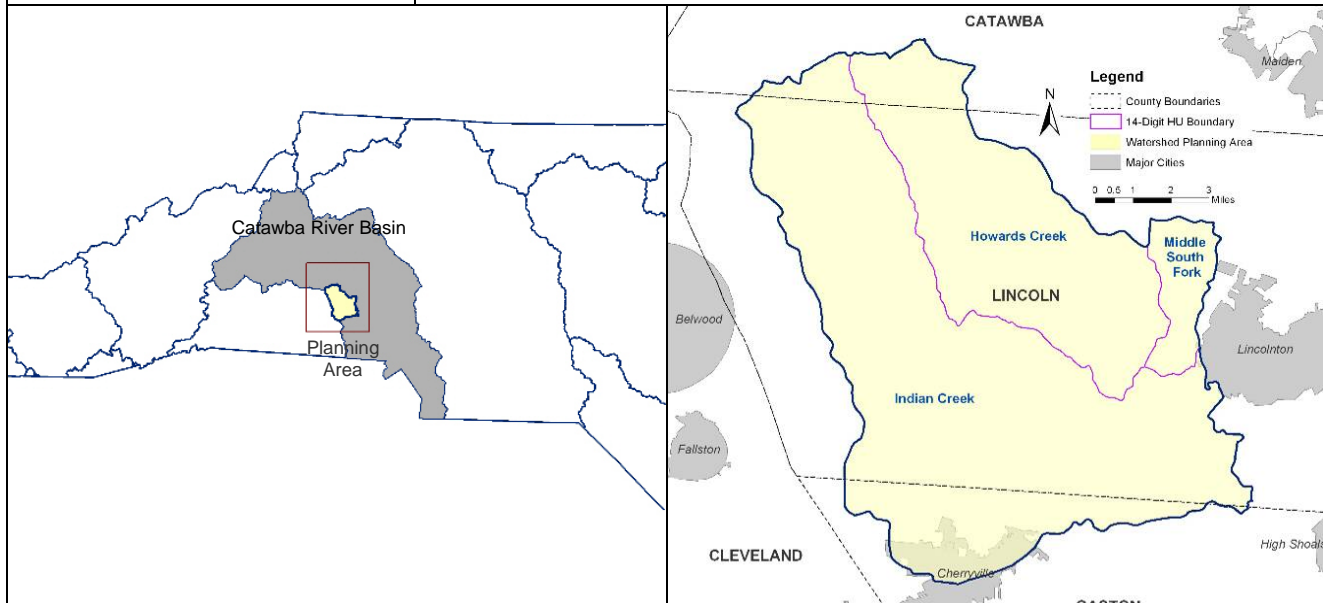


Restoring... Enhancing... Protecting Our State

INDIAN CREEK AND HOWARDS CREEK LOCAL WATERSHED PLAN

FACT SHEET

Location:	West of the City of Lincolnton
River Basin:	Catawba River Basin's South Fork
Cataloging Unit:	03050102
14-digit Hydrologic Units:	03050102040040, 03050102050010, 03050102040030
Counties:	Lincoln, Catawba, and Gaston
Watershed Area:	Indian Creek 75 mi ² , Howard's Creek 34 mi ² , Middle South Fork 5 mi ²
Planning Contact:	Mike Herrmann (919)715-5458 (Michael.Herrmann@ncdenr.gov); Hal Bryson (828)450-9408 (Hal.Bryson@ncdenr.gov)
Participants:	Lincoln & Gaston County Staff, SWCD, Carolina Land & Lakes RC&D, NC Source Water Protection Program, State and Federal Resource Agencies.
Supporting Consultant:	ENTRIX Inc. (Jeff Keaton (919)239-8904; JKeaton@entrix.com)
Project Website:	http://www.nceep.net/services/lwps/Indian_Howards_Creek/INDIAN_HOWARD_CREEKS.html



Project Overview

Indian, Howards, and Middle South Fork Hydrologic Units are a part of the South Fork of the Catawba River Basin. The three watersheds are contiguous and cover portions of Lincoln, Catawba and Gaston County. The watersheds are largely rural with a mix of forest and farms. Drinking water intake sites for the cities of Cherryville and Lincolnton are located within the watershed planning area.

In 2006, Lower Indian Creek was identified by NC Division of Water Quality as having impaired biology. Field visits to the area revealed impacts to streams, their riparian area, and wetlands.



1652 Mail Service Center, Raleigh, NC 27699-27699-1652 / 919-715-0476 / www.nceep.net



N.C. Ecosystem Enhancement Program



Restoring... Enhancing... Protecting Our State

EPP is partnering with area resource professionals that have been working proactively to improve water quality in the South Fork and protect drinking water supplies. This partnership will aid the plan in addressing challenges related to drinking water protection, stormwater runoff, and rural preservation.

The planning process began in early 2008 with review of existing data on the watersheds and stakeholder meetings with resource professionals. Fieldwork and monitoring are mostly complete and are in the process of being analyzed. The project is scheduled to be completed in the spring of 2010. Project materials, including meeting notes, maps, and reports, can be downloaded from the project [website](#).

[LWP Reports](#)

[Preliminary Findings \(6.5 MB\)](#)

[Detailed Assessment Report \(Winter 2010\)](#)

[Final Plan & Project Atlas \(Spring 2010\)](#)

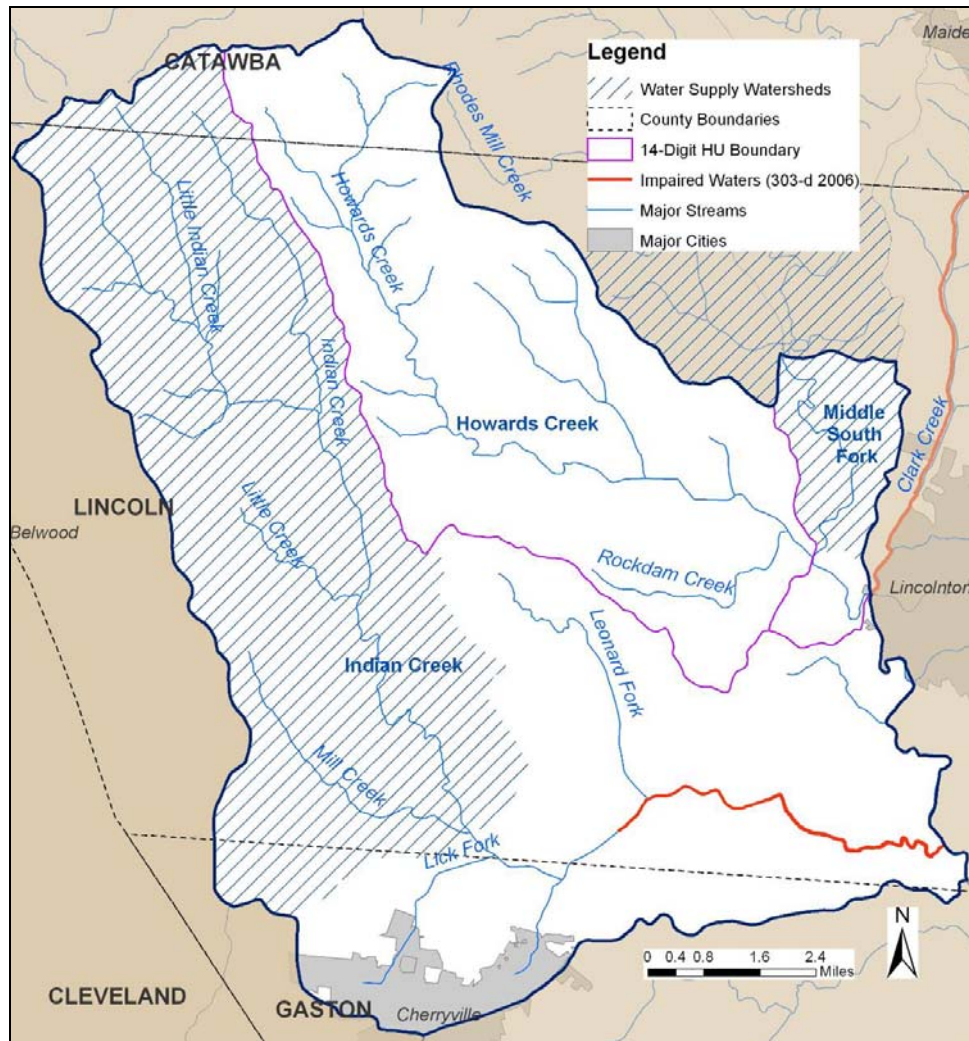


Figure 1. Local Watershed Plan Area Detail.

