

Appendix E

Atlas of Potential Restoration Sites

Appendix E

Atlas of Potential Restoration Sites

The 16 potential stream restoration sites identified during the course of Phase 1 of the planning process are shown in Table 1 and Figure 1, followed by photographs of each site. Factors considered in identifying sites included: lack of sinuosity; other signs of channel modification; bank instability; absence of appropriate riparian vegetation; the existence of a substantial length of impacted stream (generally a minimum of approximately 1500 feet); and in most cases the absence of significant constraints such as roads or structures adjacent to the channel.

Table 1. Potential Stream Restoration Project Opportunities

Site ID No.	Stream	Location	Sub-watershed
R-1	Moore Branch (shown on USGS maps as Fate Puett Cove Creek)	above SR 1538	UPT
R-2	Lamb Branch	below Upper Peachtree Rd	MPT
R-3	Peachtree Creek	below NC 141	MPT
R-4	Cornwell Branch	along Fall Branch Road	GSB
R-5	Snead Branch	below Hendrix Road	GSB
R-6	Messer Branch and un-named tributary	above Hendrix Rd	MBR
R-7	Slow Creek	above Greenlawn Cemetery Rd	SBT
R-8	Slow Creek	upstream of NC 141, near White Mountain Road	SBT
R-9	Un-named tributary to Slow Creek	along Canyon Road	SHW
R-10	Un-named tributary to Slow Creek	along Canyon Road	SHW
R-11	Slow Creek	along NC 141, near headwaters	SHW
R-12	Hampton Creek	in Cherokee Hills Golf and Country Club, above Mulkey Road	HCK
R-13	Un-named tributary to Martins Creek	at Crisp Road	MMC
R-14	Martins Creek	at Crisp Road	MMC
R-15	Martins Creek and un-named tributary	in Wildcat subdivision, off Martins Creek Road	MMC
R-16	Martins Creek	off Tobe Stalcup Road	MMC

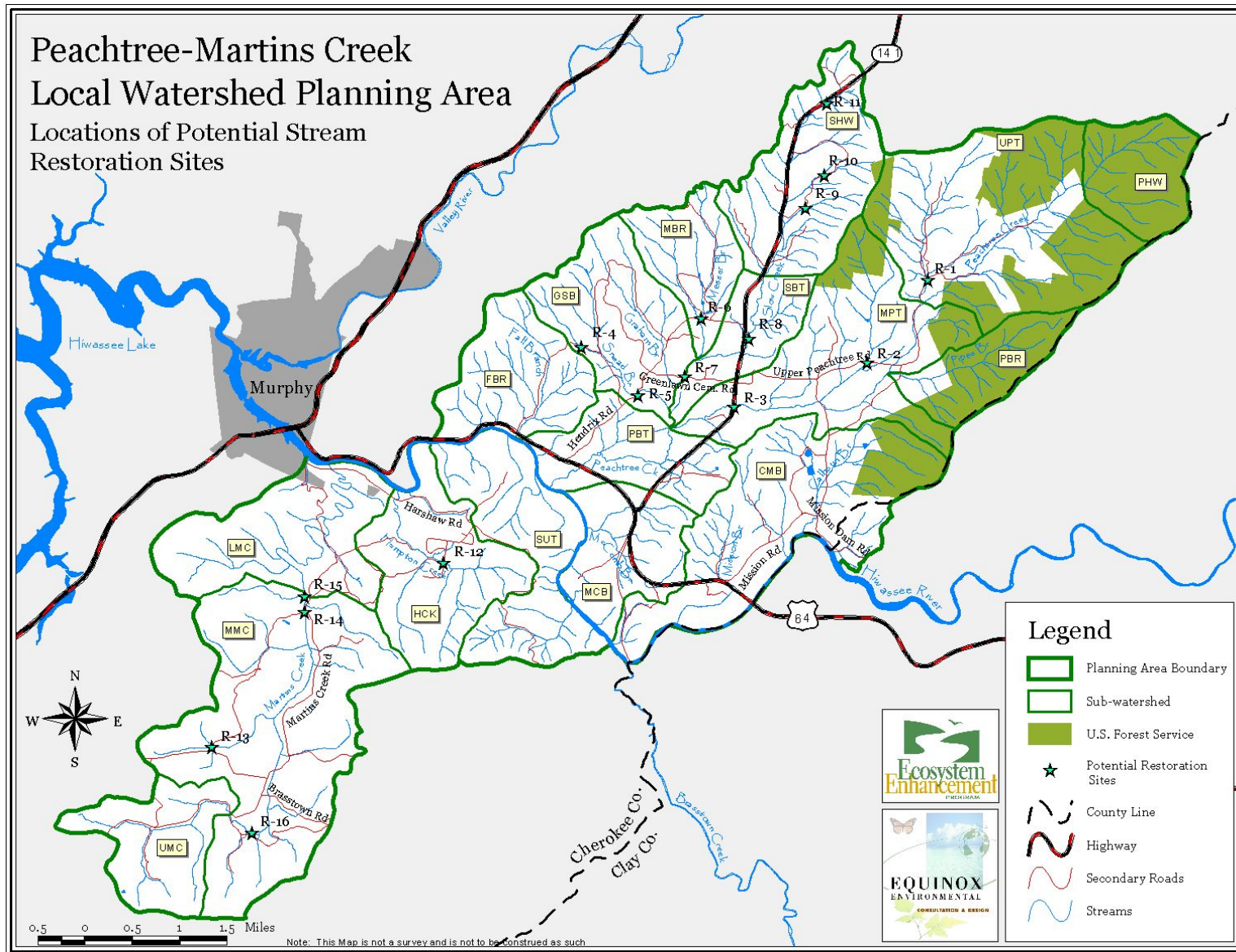


Figure 1. Location of Potential Stream Restoration Sites



Site R-1. Moore Branch (shown on USGS maps as Fate Puett Cove Creek) at SR 1538. Upstream view from road culvert.



R-2. Lamb Branch, view downstream from Upper Peachtree Rd. (windshield survey site #9).



R-3. Peachtree Creek at NC 141, downstream view (windshield survey site #11).



R-4. Cornwell Branch, along Fall Branch Road.



R-5. Snead Branch at Hendrix Road (windshield survey site #22).



R-6. Messer Branch and un-named tributary at Hendrix Rd, upstream view (windshield survey site #19).



R-7. Slow Creek at Greenlawn Cemetery Rd, upstream view (windshield survey site #18).



R-8. Slow Creek upstream of NC 141, near White Mountain Road.



R-9. Un-named tributary to Slow Creek along Canyon Road.



R-10. Un-named tributary to Slow Creek along Canyon Road.



R-11. Upper Slow Creek along NC 141 (line of vegetation in center of photo).



R-12. Hampton Creek in Cherokee Hills Golf and Country Club, above Mulkey Road (windshield survey site #39).



R-13. Un-named tributary to Martins Ck at Crisp Road, upstream view (windshield survey site #42).



R-14. Martins Creek at Crisp Road, upstream view(windshield survey site #45).



R-15. Martins Creek at Wildcat subdivision, off Martins Creek Road.



R-15. Un-named tributary to Martins Creek at Wildcat subdivision.



R-16. Martins Creek off Tobe Stalcup Road.