

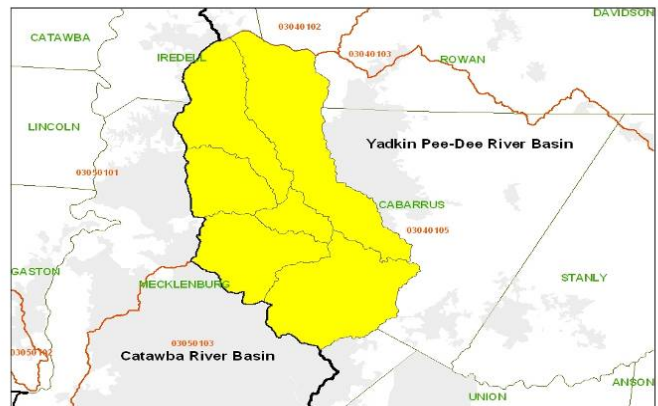
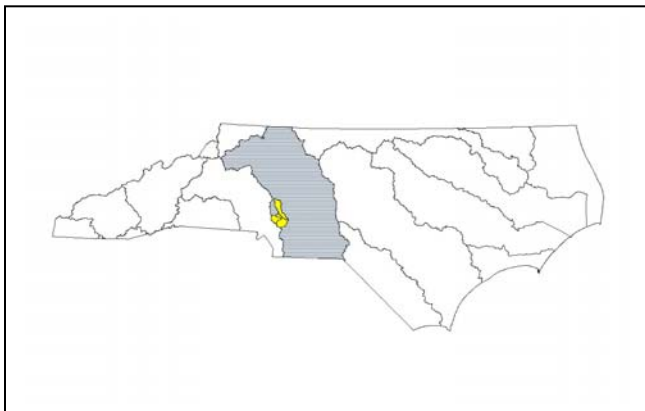
# N.C. Ecosystem Enhancement Program



*Restoring... Enhancing... Protecting Our State*

## UPPER ROCKY RIVER LOCAL WATERSHED PLAN FACT SHEET

<b>Location:</b> <b>River Basin:</b> <b>Catalog Unit:</b> <b>14-digit Hydrologic Units:</b>	Near Charlotte, NC Yadkin-Pee Dee 03040105 03040105010010 (upper Rocky R. & Dye Branch) and 03040105010020 (Clarke Creek) 03040105020010 (Coddle Creek); 03040105010030 (mainstem Rocky River); 03040105010040 (Mallard Creek); and 03040105010050 (Reedy & Back Creeks)
<b>Counties:</b>	Cabarrus, Iredell, Mecklenburg, Rowan
<b>Watershed Area:</b>	~ 200 square miles
<b>Planning Contact:</b>	Anjie Ackerman – Ecosystem Enhancement Program (EEP) (919) 715-1950 or <a href="mailto:anjie.ackerman@ncdenr.gov">anjie.ackerman@ncdenr.gov</a>
<b>Participants:</b>	County Planners; County Soil & Water Districts and Natural Resources Conservation Service (NRCS); Municipal planners & storm water staff; Local/regional Land Trusts; Yadkin-Pee Dee River Basin Association; Wildlife Resources Commission; N.C. Division of Forestry; NC DENR - DWQ Regional Office staff
<b>Watershed Assessment Contractor:</b>	<b>Phase 1</b> – Camp Dresser & McKee (CDM), Raleigh office Brenan Buckley (919) 787-5620 <b>Phase 2</b> - Mactec Engineering, Inc., Raleigh, NC Guy Winebrenner (919) 876-0416
<b>Stakeholder Facilitation &amp; Public Education:</b>	NCSU – WECO, Raleigh, NC Christy Perrin, Project Manager (919) 515-4542



### **Project Overview:**

There are 2 phases of work for this Local Watershed Plan (LWP). The Phase 2 initiative represents a geographic expansion of the Phase 1 LWP project conducted by EEP in the lower Yadkin River basin. The Phase 1 LWP addresses watershed conditions in the Clarke Creek and upper Rocky River 14-digit HUs; the final watershed management plan from this initial effort was completed December 2003. The Phase 2 effort has addressed Coddle Creek, Mallard Creek, Reedy and Back Creek. The Phase 2 Watershed Management Plan was completed in November 2004.

Together with the contiguous Phase 1 HUs, these comprise the entire upper Rocky River drainage system and all of Division of Water Quality (DWQ) Subbasin 11 in the Yadkin basin. These watersheds include a mix of urban and rural land uses, stream reaches considered "impaired" by the DWQ and several planned N.C. Department of Transportation (NCDOT) Transportation Improvement Projects (TIPs).

Mactec has assessed threats to three basic categories of watershed functions: water quality; habitat; and hydrology. DWQ staff have assisted greatly in collecting & interpreting water quality and habitat data. Watershed management plans have been developed with input from a technical advisory group consisting primarily of resource agency professionals and local municipal staff. These plans are based in part on the identification of priority sub-watersheds and the ranking of identified *Watershed Improvement Project* sites. NCSU's Watershed Education for Communities and Officials (WECO) will continue to manage the stakeholder involvement efforts and public meetings.

## **Documents**

[Phase 1 LWP Summary – January 2004](#)

[Phase 1 Watershed Management Plan – December 2003](#)

[Phase 2 Preliminary Findings & Recommendations Report - September 2003](#)

[Phase 2 Watershed Improvement Projects Report with C.U.-wide screening - October 2004](#)

[Phase 2 Watershed Management Plan- November 2004](#)

[Upper Rocky River LWP Summary of Findings and Recommendations](#)



1652 Mail Service Center, Raleigh, NC 27699-27699-1652 / 919-715-0476 / [www.nceep.net](http://www.nceep.net)



**Lower Yadkin Local Watershed Planning  
Subbasin 11 - Phases 1 and 2 LWP**

