

N.C. Ecosystem Enhancement Program



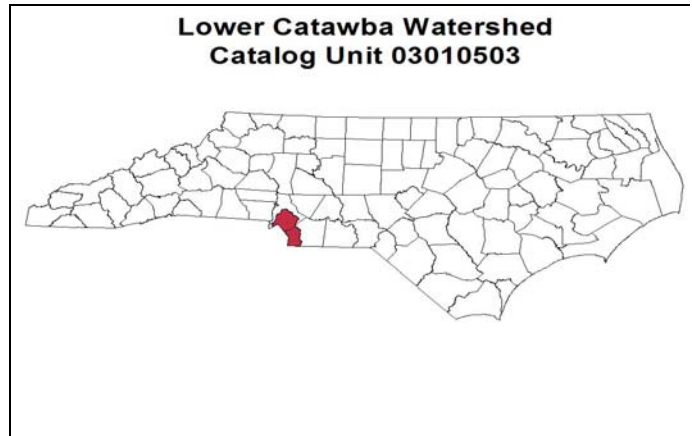
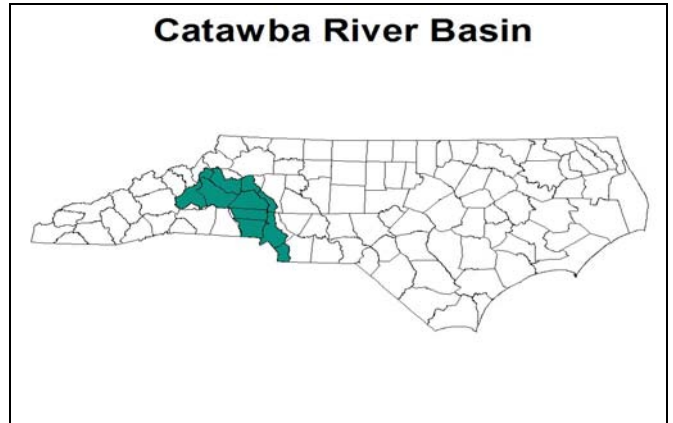
Restoring... Enhancing... Protecting Our State

CHARLOTTE AREA LOCAL WATERSHED PLAN - Phase IV

Evaluating Stormwater BMPs for Flexible Mitigation

Fact Sheet

<p>Location River Basin: Cataloging Unit: 14- digit Hydrologic Units: County:</p>	<p>Charlotte Catawba 03050103 030501030200020 & 030501030200030 Mecklenburg</p>
<p>Watershed Area (mi²):</p>	<p>3.17 Stewart Creek 2.17 Edwards Branch</p>
<p>Planning Contact:</p>	<p>Anjie Ackerman – Ecosystem Enhancement Program (919) 919-715-1950 anjie.ackerman@ncdenr.gov</p>
<p>Stakeholder Involvement:</p>	<p>City of Charlotte and Mecklenburg County Stormwater Services</p>
<p>Watershed Assessment:</p>	<p>Trevor Clements TetraTech, Inc. (919) 485-8278 ext. 100 trevor.clements@tetrattech.com</p>



Project Overview

Based on previous planning efforts in the Charlotte area, sub-watersheds of Sugar and Little Sugar Creek have been targeted for an innovative new approach to mitigate for wetland impacts using stormwater Best Management Practices (BMPs). Stormwater BMPs are being explored as a means of restoring lost hydrologic and water quality function in highly urbanized areas where traditional mitigation opportunities are lacking. Habitat replacement will be addressed through preservation of high quality wetlands in other areas of the Lower Catawba watershed.

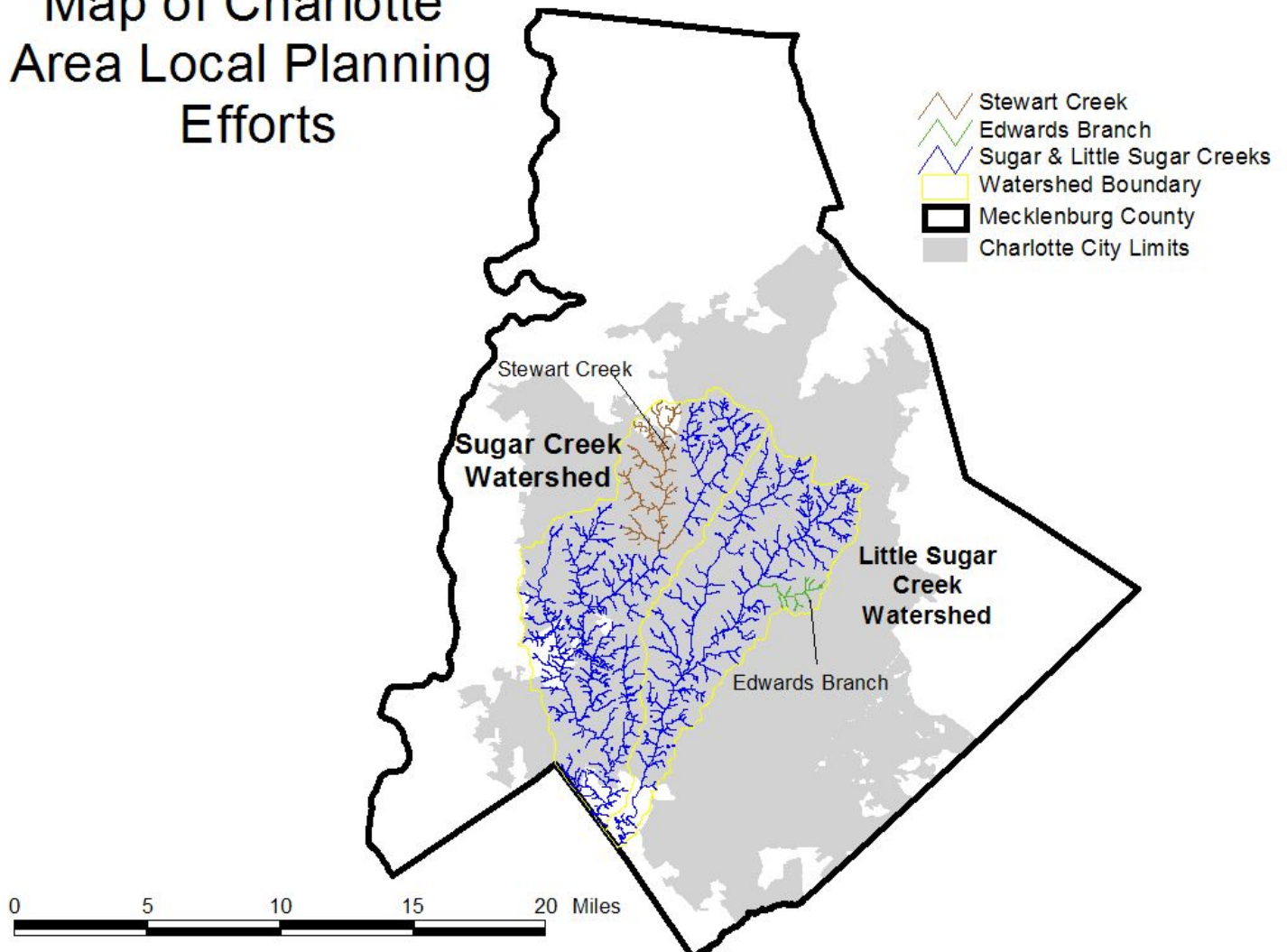
CH2MHill conducted the initial work for the project (Phases I through III), including an assessment of water quality needs within the 5 watersheds of the Charlotte area and a prioritization of 6 sub-watersheds for implementation of the alternative mitigation strategy. Two final sub-watersheds (Edwards Branch and Stewart Creek) were selected based on the need to improve water quality and hydrologic function in these catchments and because of ample opportunity for additional stormwater controls in these areas.

Tetra Tech, Inc. is presently assisting with continued local watershed planning efforts. The completed plan will identify sites for additional stormwater control and propose BMP's to achieve pollutant reduction and decrease extreme hydrologic fluctuation. As an additional result of this plan, Tetra Tech in coordination with EEP's Planning Program will develop a protocol for wetland functional mitigation through implementation of stormwater BMP's. This prototype will lay the groundwork for a flexible mitigation approach applicable to other North Carolina urban areas that lack traditional mitigation opportunities.

Project Schedule

Initial phases of catchment assessment and data compilation have already been completed. Beginning in June 2005, Tetra Tech initiated development of a wetland functional replacement protocol. They identified stormwater BMP opportunities in the two target sub-watersheds and wetland preservation sites in the broader Lower Catawba watershed. Draft document is completed and is in peer review.

Map of Charlotte Area Local Planning Efforts



1652 Mail Service Center, Raleigh, NC 27699-27699-1652 / 919-715-0476 / www.nceep.net

