

EEP PPM Section 8.2.2.1		Document No.: PLN.PRO.02.01.01	
Procedure Title: Developing River Basin Restoration Priorities		Rev. No. 1	Page 1 of 6
		Date: January 10, 2007	

1.0 PURPOSE AND SCOPE

1.1 Purpose. This procedure maps out the steps taken by the Planning group within EEP's Watershed Planning & Project Implementation (WPPI) section to develop River Basin Restoration Priorities (formerly known as Watershed Restoration Plans).

1.2 Scope. This procedure applies to the preparation of River Basin Restoration Priorities (RBRPs) as required by statute and as needed to support critical functions and objectives of EEP. The procedure supports two Planning objectives:

- (1) identification of basin wide (including cataloging unit-specific) watershed restoration goals and the selection of priority 14-digit hydrologic units (known as Targeted Local Watersheds, or TLWs) within component cataloging units (CUs) of river basins as required by statute [NCGS 143-214.10] and rules [NCAC T15A:02R.0200] associated with the original NC Wetlands Restoration Program, and
- (2) identification of specific local watersheds (as a subset of TLWs) for detailed analysis of watershed conditions and development of specific watershed solutions within the context of EEP Local Watershed Planning (LWP) initiatives. [see PPM Section 8.2.3.1 for more on LWP development]

Targeted Local Watersheds represent 14-digit HUs with a mix of restoration need (problems), resource value (assets) and opportunity. Such watersheds are most likely to contain optimal areas for the implementation of mitigation projects to restore / enhance or preserve ecological functions. The initial scale of focus for this procedure is the 8-digit CU, 54 of which span North Carolina and comprise the State's 17 river basins.

1.3 Participants. This procedure applies to the following personnel:

- EEP Strategic Planning Section
- Division of Water Quality (DWQ) Basin-Wide Planner
- EEP WPPI Section (assigned Planner)
- EEP GIS consultant (NC CGIA)
- EEP Regional Supervisor (WPPI)
- EEP WPPI Section (assigned Project Manager)
- State & Local Resource Professionals (External reviewers)
- EEP Website Manager

2.0 PROCEDURE STEPS

2.1 Identify CUs in river basins scheduled for update. Each of the 17 river basin's RBRPs should be updated at least once every five years; ideally this occurs

EEP PPPM Section 8.2.2.1		Document No.: PLN.PRO.02.01.01	
Procedure Title: Developing River Basin Restoration Priorities		Rev. No. 1	Page 2 of 6
Date: January 10, 2007			

- concurrently with the NC DWQ's updating of their Basinwide Water Quality Plans [see http://h2o.enr.state.nc.us/basinwide/basinwide_wq_planning.htm].
- 2.2 GIS Screening of 8-digit Cataloguing Units (CUs). The Planner directs the NC Center for Geographic Information and Analysis (CGIA) to screen the component 14-digit Hydrologic Units (HUs) in all 54 8-digit CUs for local watershed attributes. Attributes include baseline data, problems such as impaired streams, assets such as resources appropriate for preservation, and opportunities for restoration.
 - 2.3 CGIA produces Watershed Attribute Matrices (WAMs), which are compilations of the attributes identified during the screening.
 - 2.4 Planner analyzes WAMs and selects preliminary Targeted Local Watersheds (TLWs). (See Guidance regarding how to weight various attributes and prioritize the cataloguing units.)
 - 2.5 Compile and review non-GIS data. The Planning Section reviews information from non-GIS source documents to glean and summarize information pertinent to local watershed, sub-watershed, and stream reach conditions. Data sources include DWQ *Basin-wide Assessment Reports*, NC Natural Heritage Program county-specific *Natural Heritage Inventories*, county soil survey reports, DWQ TMDL modeling reports, NC DOT Transportation Improvement Program reports, Clean Water Management Trust Fund Riparian Corridor mini-grant reports and plans, and Soil and Water Conservation District reports and inventories.
 - 2.6 Develop draft watershed restoration goals and draft Targeted Local Watersheds. The Planner generates a list of draft TLWs including a summary of the rationale used in selecting each HU as a TLW.
 - 2.7 Conduct initial field tour of candidate Targeted Local Watersheds. The Planner, Project Manager and DWQ Planner conduct a field tour to 1) verify and document the problems suggested by the GIS data, and 2) identify potential restoration or preservation sites in the candidate watersheds.
 - 2.8 Revise list of Targeted Local Watersheds. If the field tour reveals significantly different conditions than shown in the GIS data, the Planner will revise the Draft TLW list.
 - 2.9 Contact local Resource Professionals to solicit input. If necessary, the Planner compiles a list of state and local Resource Professionals who work within or have an interest in the river basin. The Planner contacts via phone or email those most likely to have recent information about local watershed conditions, potential threats to water quality and aquatic habitat, and local watershed initiatives.

EEP PPM Section 8.2.2.1		Document No.: PLN.PRO.02.01.01	
Procedure Title: Developing River Basin Restoration Priorities		Rev. No. 1	Page 3 of 6
		Date: January 10, 2007	

- 2.10 Conduct field tours with Resource Professionals. EEP staff arranges a second field tour that includes local Resource Professionals as a means to gain input, collaboration, and contacts with local property owners who might be interested in signing conservation easements.
- 2.11 Draft the River Basin Restoration Priorities, including goals.
- 2.12 Solicit comments from sister agencies, in-house reviewers and local Resource Professionals. In-house reviewers include other Planning staff, the Project Manager and Regional Supervisor. The Planner asks for comments within 30 days.
- 2.13 Incorporate comments and finalize the River Basin Restoration Priorities. The two major elements of the final priorities are the CU-specific restoration/protection goals and the Targeted Areas. The Planner should also include an appendix with the data sources, comments and input from local RPs.
- 2.14 Post the document on the EEP Website.
- 2.15 Provide notice of the document's availability.
- 2.16 Provide hard copies as requested.

3.0 RESPONSIBILITIES AND AUTHORITIES

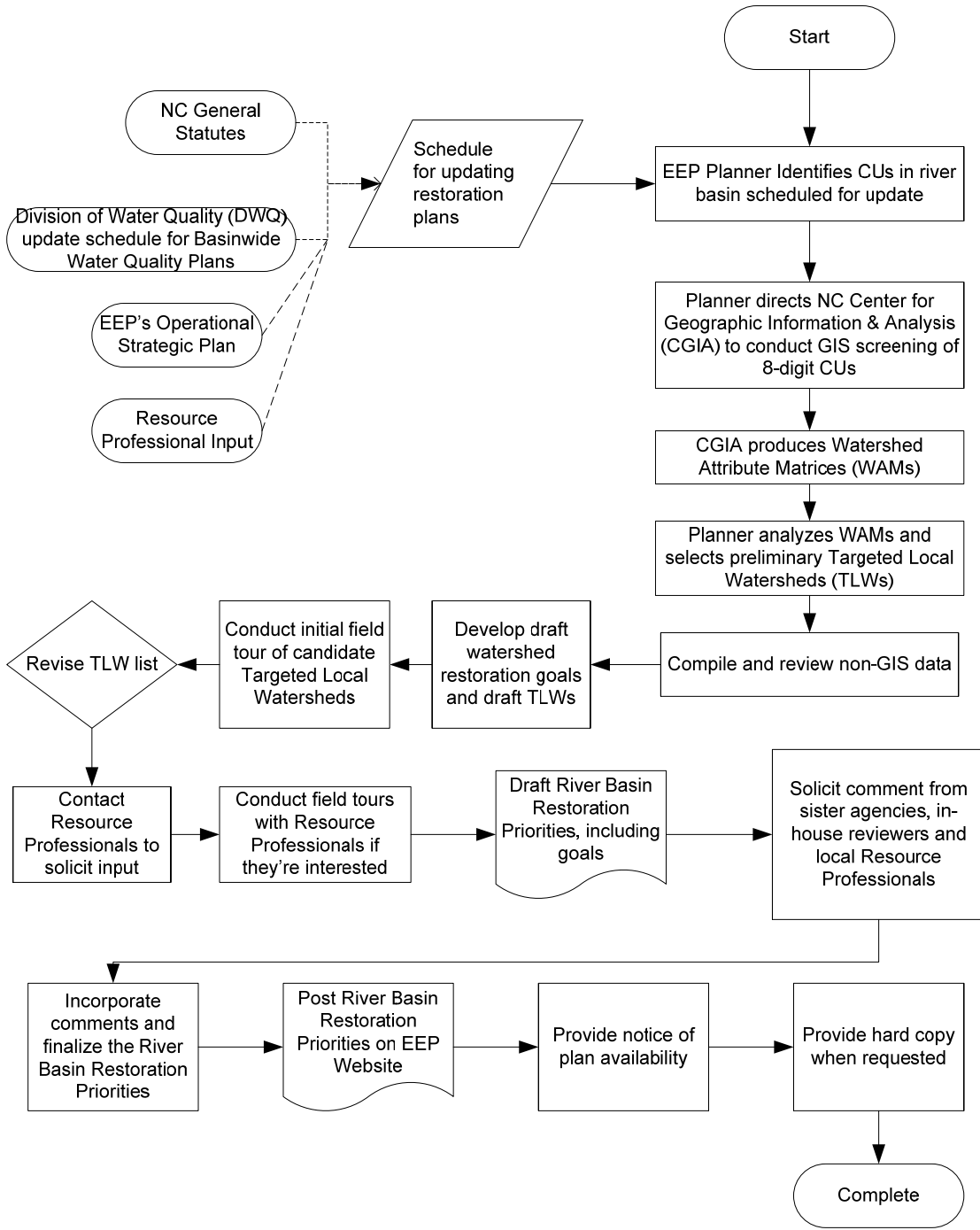
Table 1. Responsibilities and Authorities

Step #	Procedure Step	EEP Strategic Planning Section	EEP Planner	NC Center for Geo. Inform.. and Analysis	DWQ Basin-wide Planner	EEP Project Manager	Planning Supervisor	EEP Reviewers	External Reviewers /Resource Professionals	EEP Website Manager
1	Identify CUs in river basins scheduled for update	A	P							
2	GIS Screening of 8-digit Cataloguing Units		RA	P						
3	Produce Watershed Attribute Matrices		RA	P						
4	Analyze WAMs and select TLWs		P							
5	Compile and review non-GIS data		P							
6	Develop draft watershed restoration goals and draft TLWs		P				RA			
7	Conduct initial field tour of candidate TLWs		P		A	A				
8	Revise list of TLWs		P				RA			
9	Contact Local Resource Professionals for input		P				RA		S	
10	Conduct field tour with Resource Professionals		P			A	A		A	
11	Draft the River Basin Restoration Priorities		P				RA			
12	Solicit comments		P		RI	RI	RI	RI	RI	
13	Incorporate comments and finalize the River Basin Restoration Priorities		P				RA			
14	Post document on EEP Website		A							P
15	Provide notice of document availability		P							
16	Provide hard copies as requested		P							

Legend:

- P** = Primary responsibility
- A** = Assist
- RI** = Review to provide Input
- RA** = Review and Approve
- N** = Notify
- S** = Submit final output to this person

4.0 PROCEDURE FLOW DIAGRAM



TLW and River Basin Restoration Priorities ID No. PLN.PMP.02.01.01	
Owner: Marc Recktenwald	01/10/2007 Rev. 1

EEP PPM Section 8.2.2.1		Document No.: PLN.PRO.02.01.01	
Procedure Title: Developing River Basin Restoration Priorities		Rev. No. 1	Page 6 of 6
		Date: January 10, 2007	

5.0 REFERENCES

- 5.1 North Carolina Wetlands Restoration Program. NC General Statutes 143-214.8 through 143-214.13.
- 5.2 *EEP Watershed Needs Assessment Team Report to the Mitigation Coordination Group*, October 2003
- 5.3 *Guide to NC Ecosystem Enhancement Program's Watershed Restoration Strategy*, April 2001; with addenda
- 5.4 DWQ Basinwide Planning Program:
http://h2o.enr.state.nc.us/basinwide/basinwide_wq_planning.htm
- 5.5 DWQ Environmental Sciences Section, Basinwide Assessment Reports:
<http://h2o.enr.state.nc.us/esb/bar.html>

6.0 FORMS

None.